


Indian Affairs  
School Files

(RG 10, Volume 6221)

File 472-10, part 4

Kenora Agency - McIntosh Residential  
School - Roman Catholic - Admissions  
& Discharges. 1941 - 1947.

File 472-16, part 1

Kenora Agency - McIntosh Residential  
School - Roman Catholic - Hydro Plant  
and Water Supply System (plans, Maps,  
Photo). 1924 - 1925.

File 472-16, part 2

Kenora Agency - McIntosh Residential  
School - Roman Catholic - Hydro Plant  
and Water Supply System. 1925 - 1926.

File 472-16, part 3

Kenora Agency - McIntosh Residential  
School - Roman Catholic - Hydro Plant  
and Water Supply System. 1926 - 1929.

File 472-16, part 4

Kenora Agency - McIntosh Residential  
School - Roman Catholic - Hydro Plant  
and Water Supply System (Plans, Maps).  
1930 - 1937.

File 472-23, part 1

Kenora Agency - McIntosh Residential  
School - Roman Catholic - Deaths of  
Pupils. 1936 - 1939.

Indian Affairs. (RG 10, Volume 6221, file 472-16, part 1)



3938 - Canyon River - Lumbering dam from upstream.  
May 9, 1924.



3939 - Canyon River - Lumbering dam from left bank.  
May 9, 1924.



3940 - Canyon River - Sluice in lumbering dam from  
downstream.  
May 9, 1924.





3941 - Canyon River - Log-chute and dam. May 9, 1924.



3942 - Canyon River - Looking up log-chute. May 9, 1924.



3943 - Canyon River - Looking down log-chute. May 9, 1924.



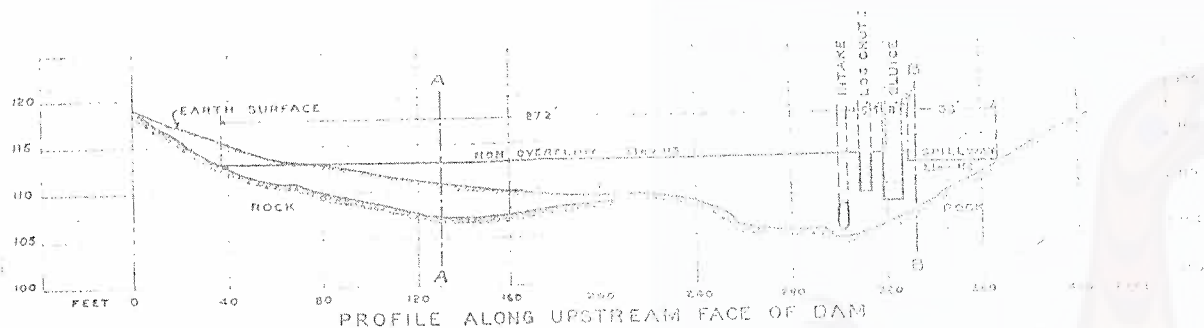
3944 - Canyon River - Looking down log-chute. May 9, 1924



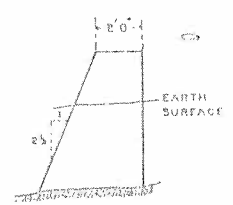
3945 - Canyon River - End of log-chute at Canyon Lake. May 9, 1924.



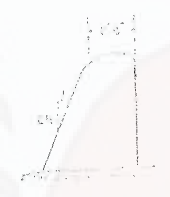
3946 - Canyon River - Foot of fall from below. May 9, 1924.



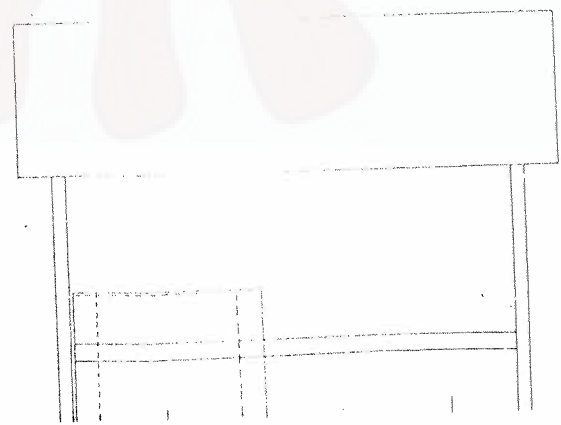
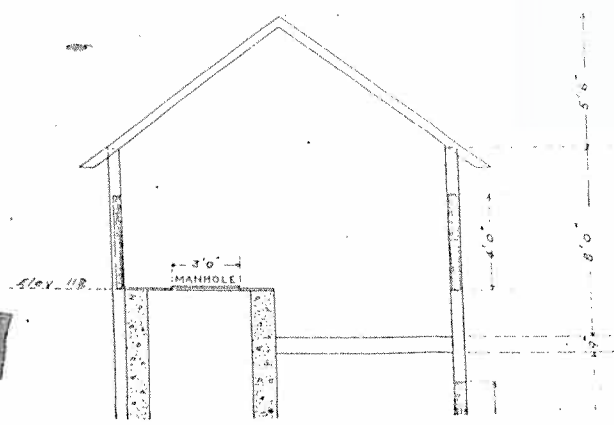
PROFILE ALONG UPSTREAM FACE OF DAM



SECTION A-A-TYPICAL  
Scale 1/2" = 1'

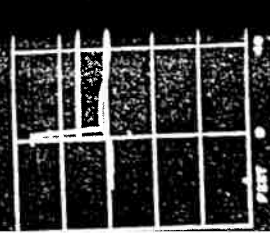
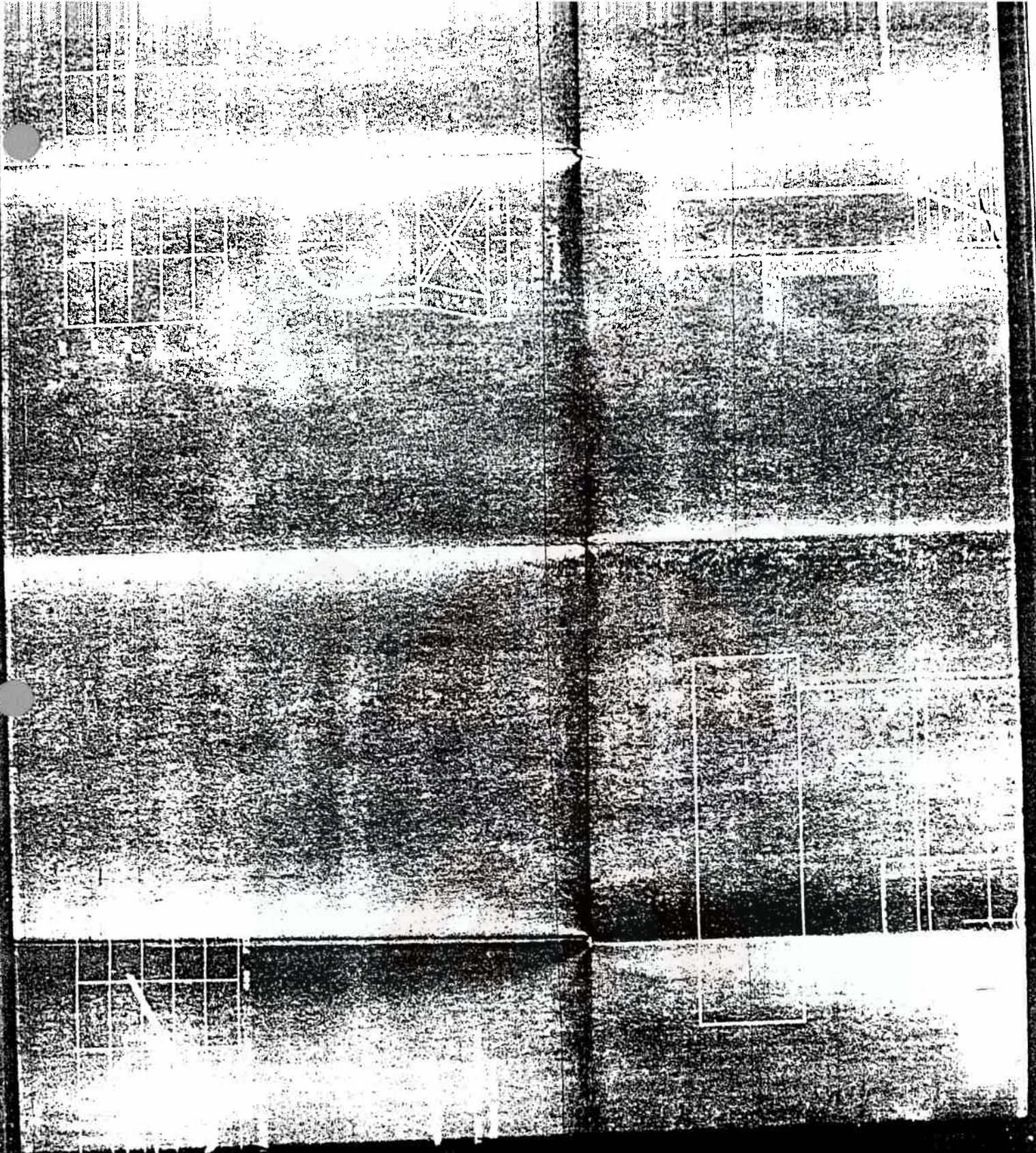


SECTION B-B-TYPICAL  
Scale 1/2" = 1'

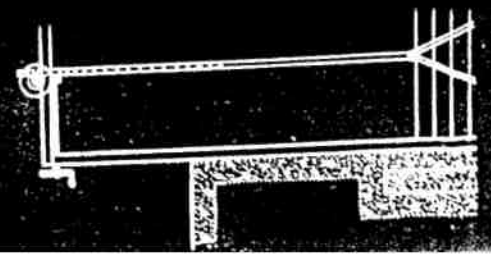


1 OF

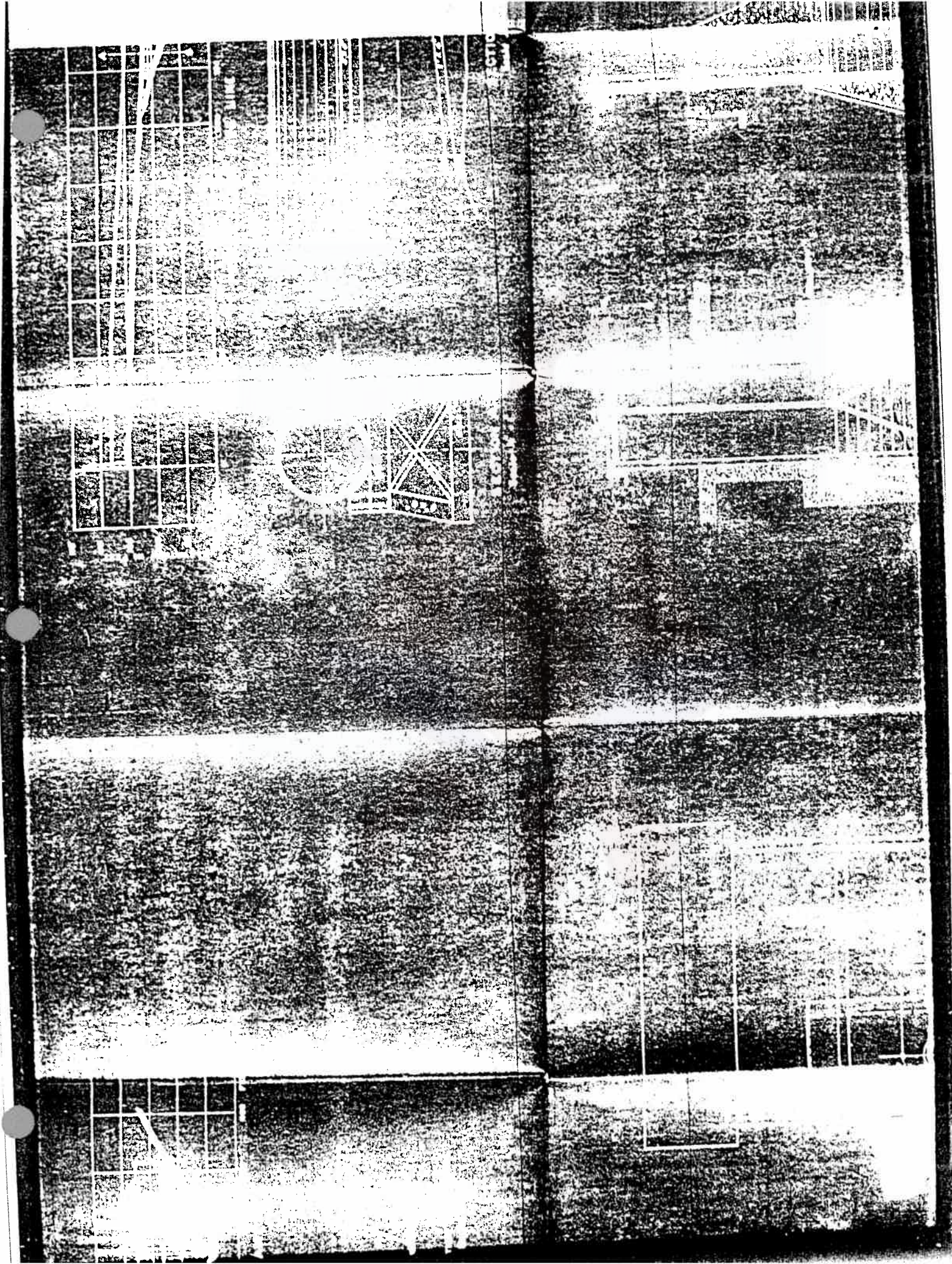




SECTION A-B  
Scale N. 1'



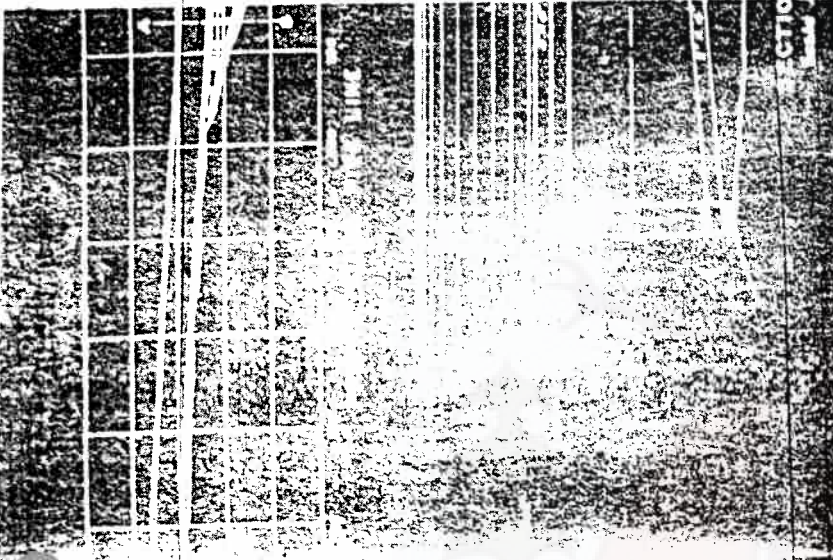




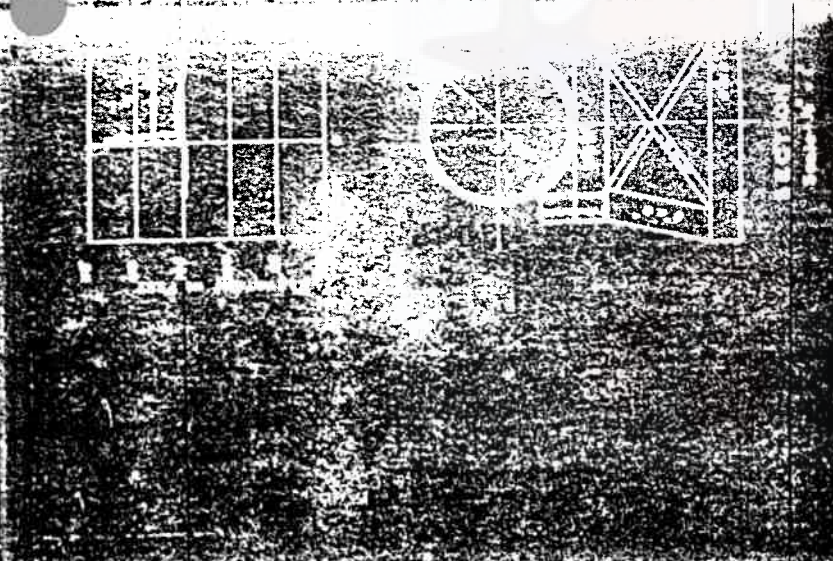




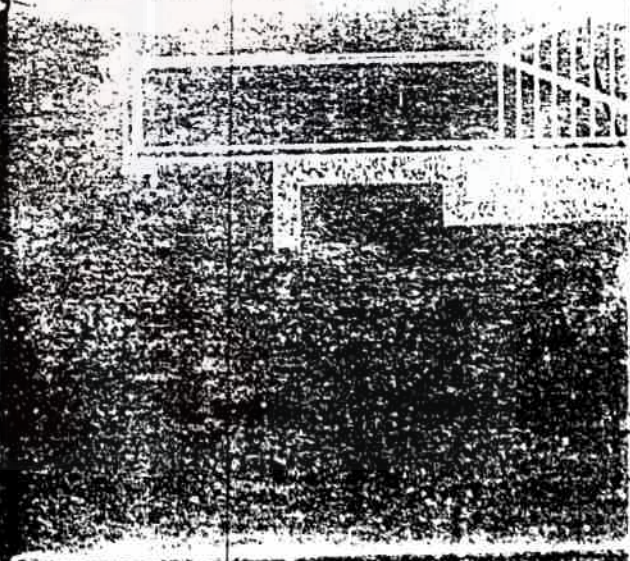
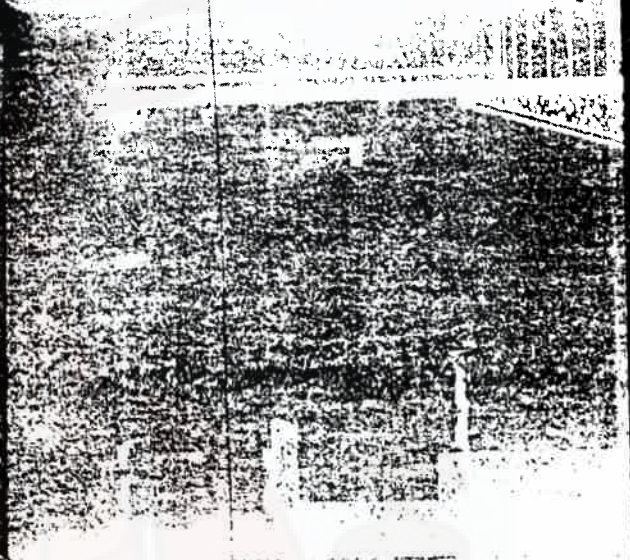
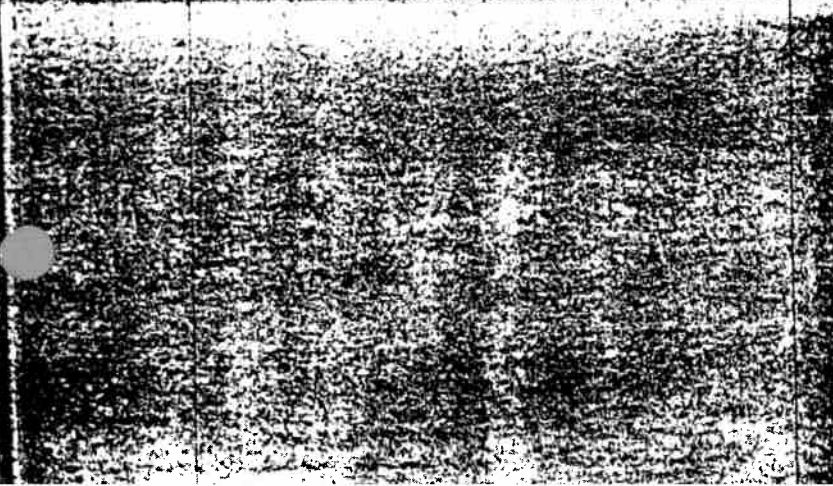
SECTION 2-8



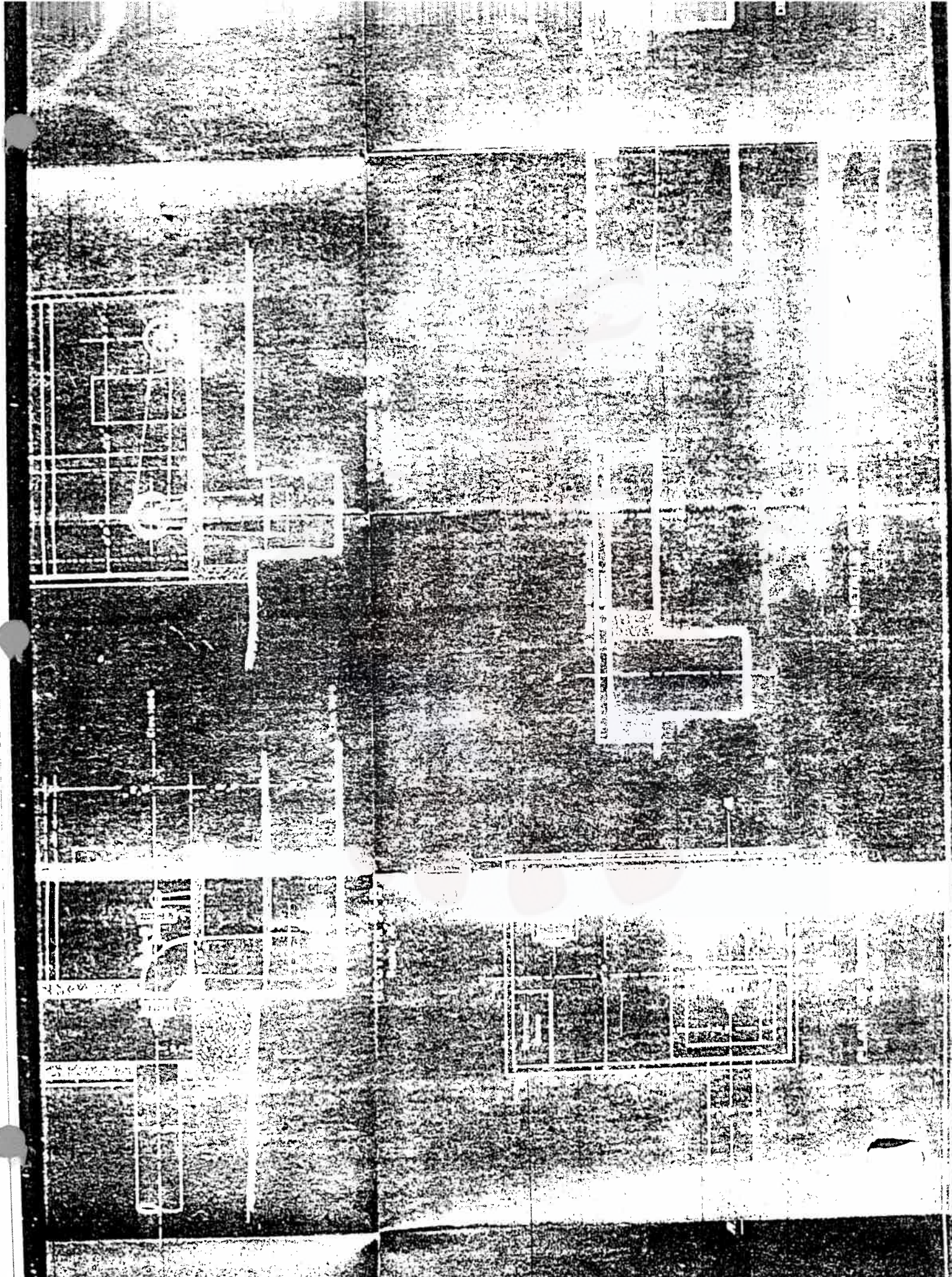
SECTION 2-9



SECTION 2-10



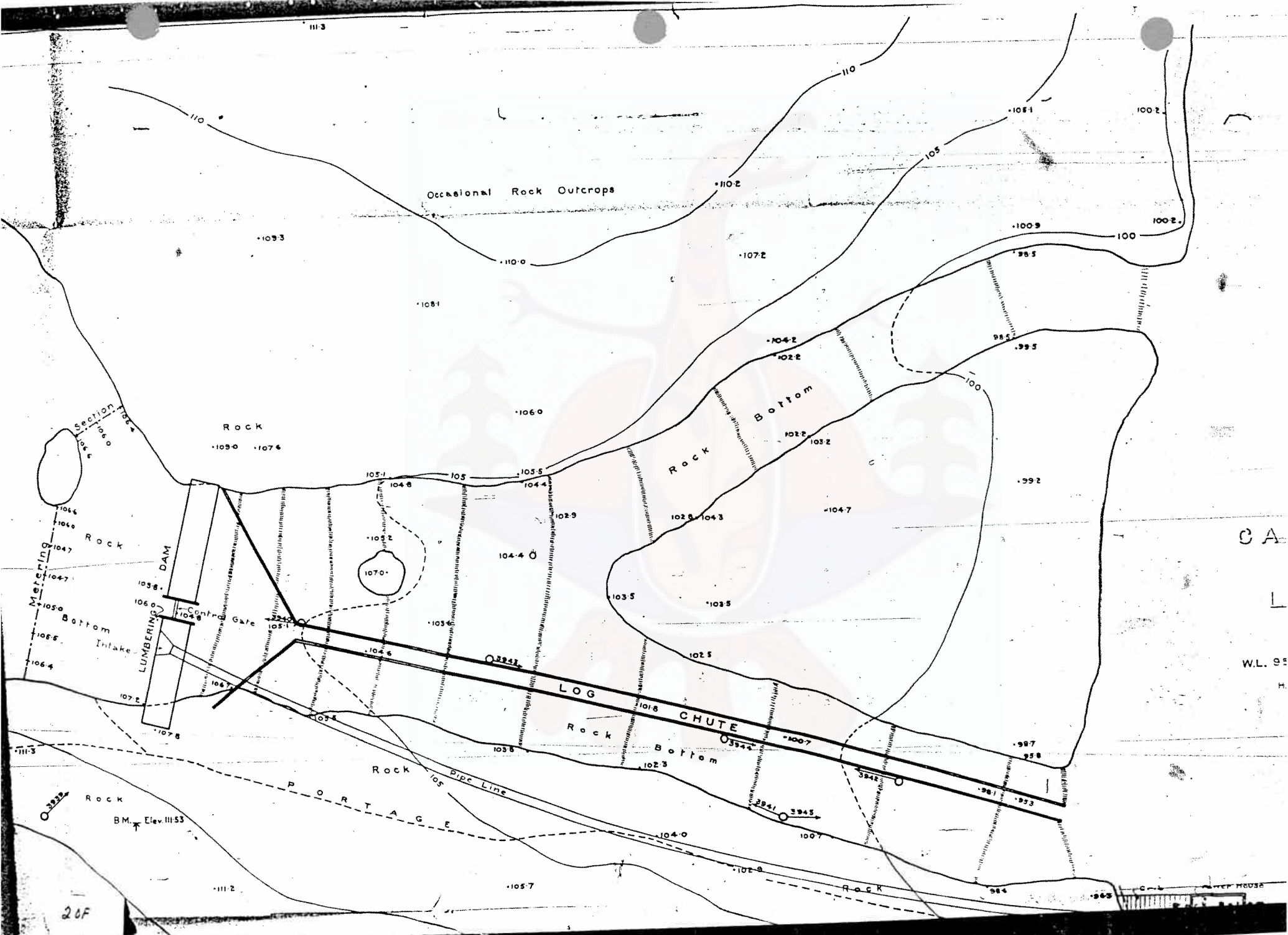








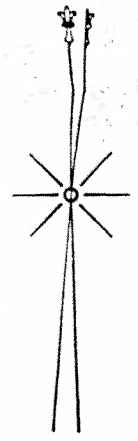




CA  
 L  
 W.L. 95  
 H.

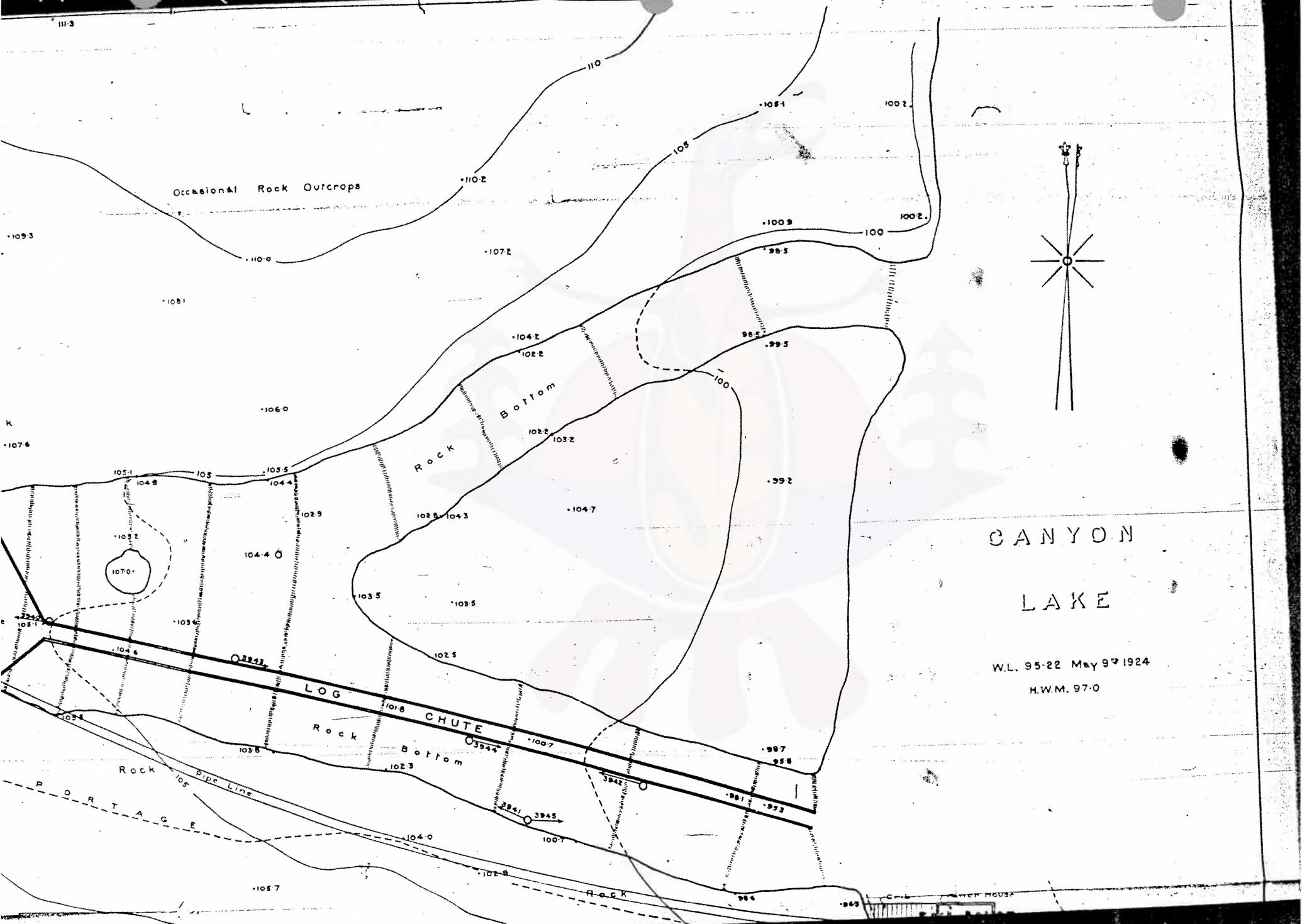


Occasional Rock Outcrops

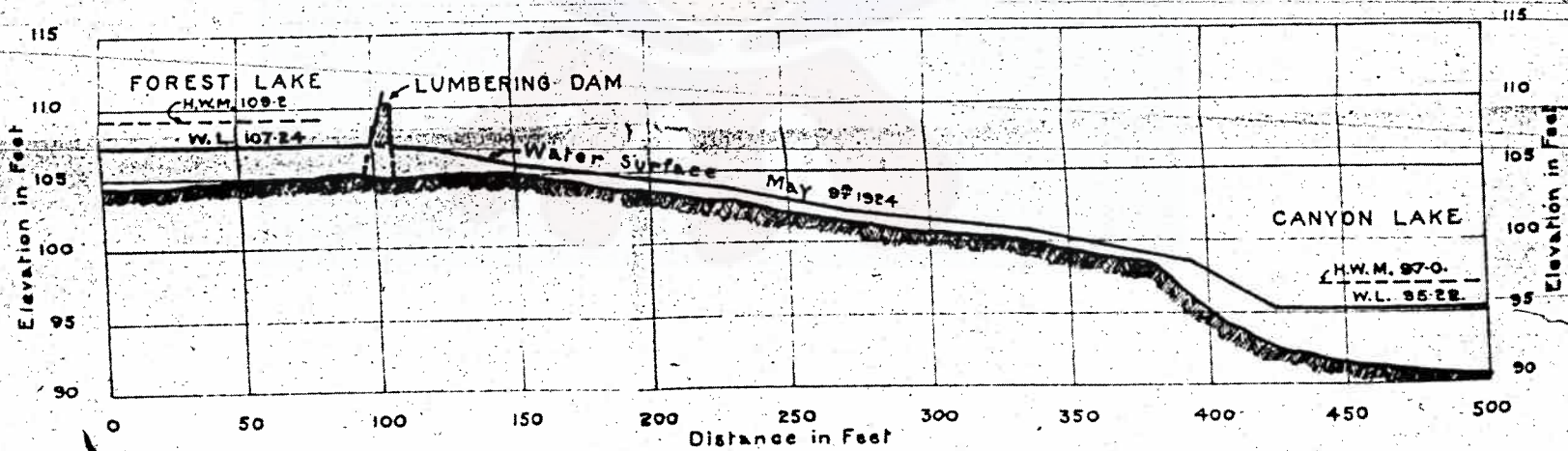
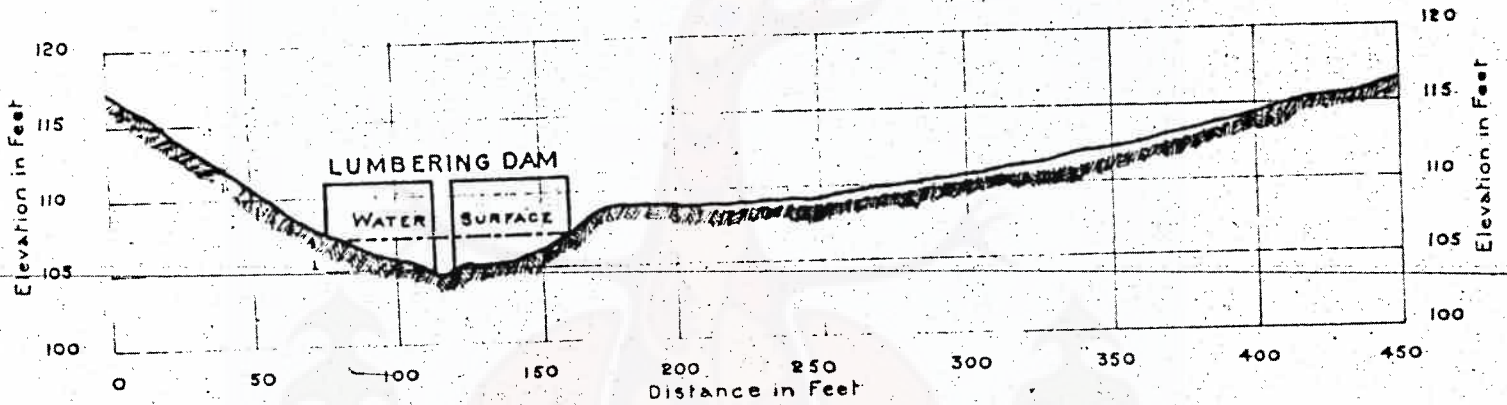


# CANYON LAKE

W.L. 95-22 May 9<sup>th</sup> 1924  
H.W.M. 97-0

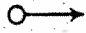






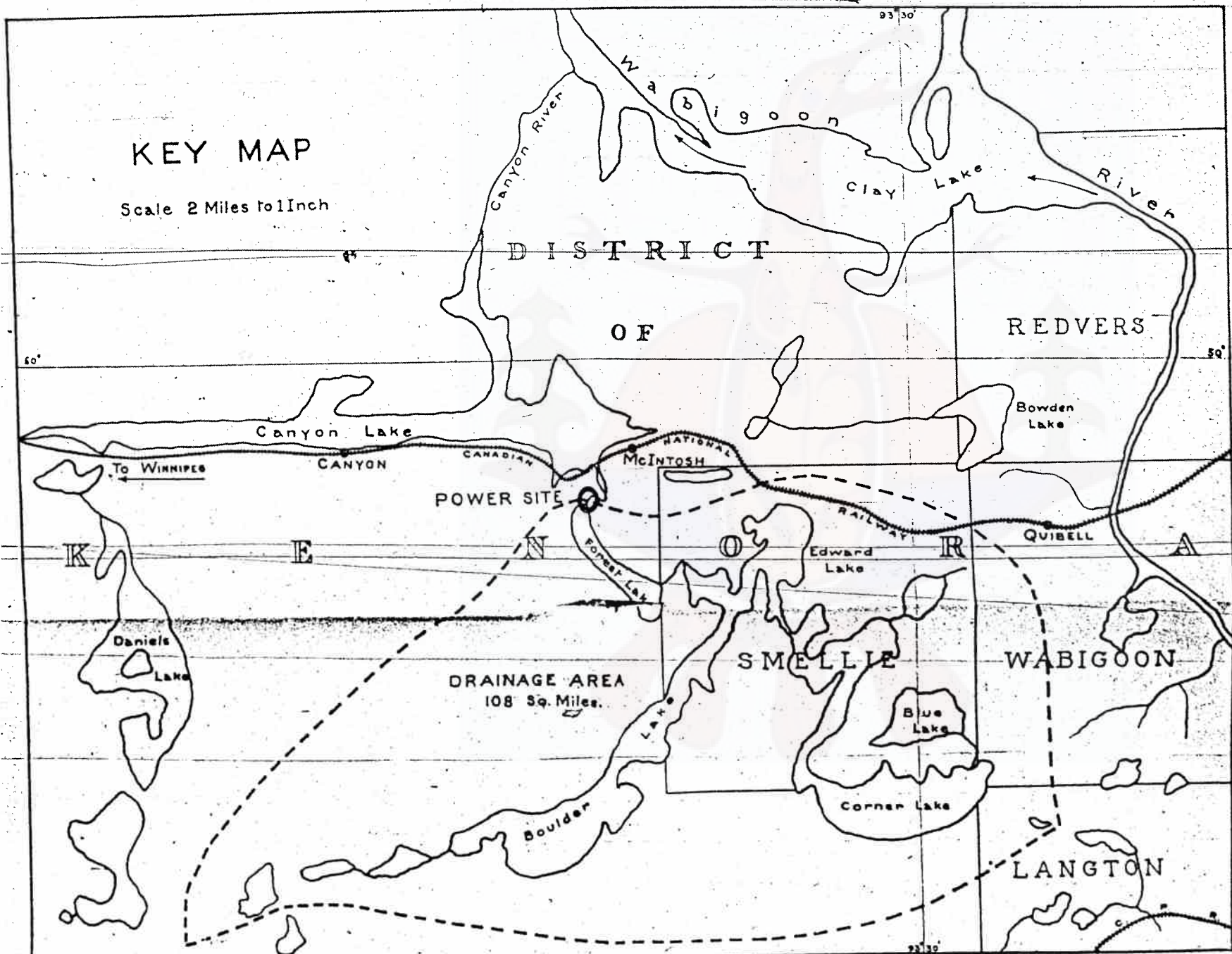
30F.



Camera positions shown thus 

# KEY MAP

Scale 2 Miles to 1 Inch





1174 1112 1057

1171

1121

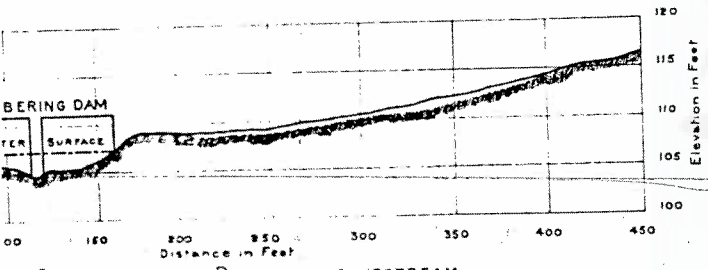
1077

Occasional Rock Outcrops

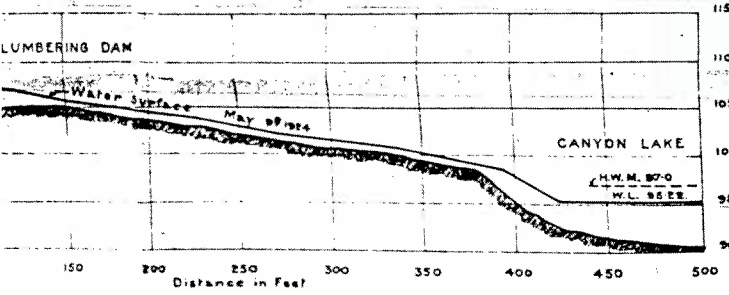
1107

1073

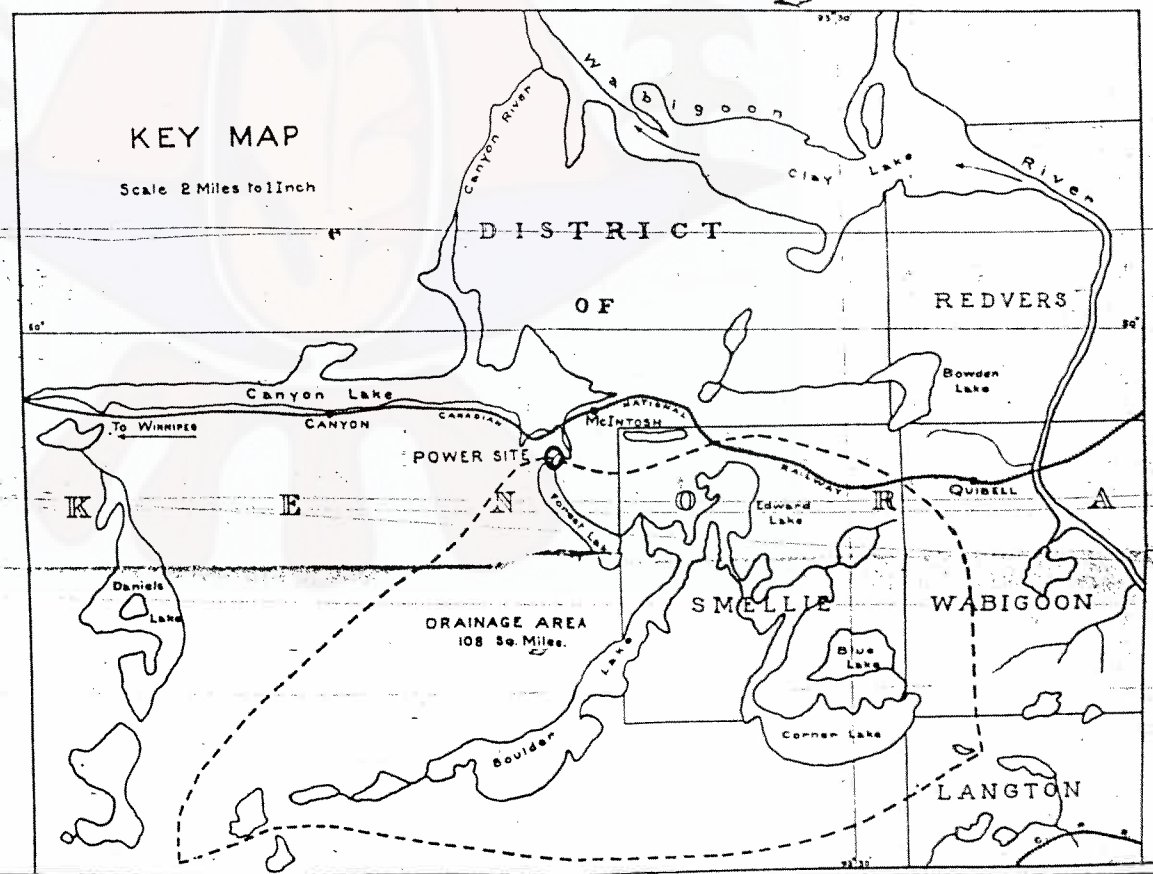
Camera positions shown thus  $\circ \rightarrow$



SECTION ON LINE OF DAM LOOKING UPSTREAM



PROFILE OF CANYON RIVER BETWEEN FOREST AND CANYON LAKES





Occasional Rock Outcrops

1077

1107

1073

1023

1022

105

110

088.7

97.5

97.8

Elev. 100.0


190.0

80

Platform

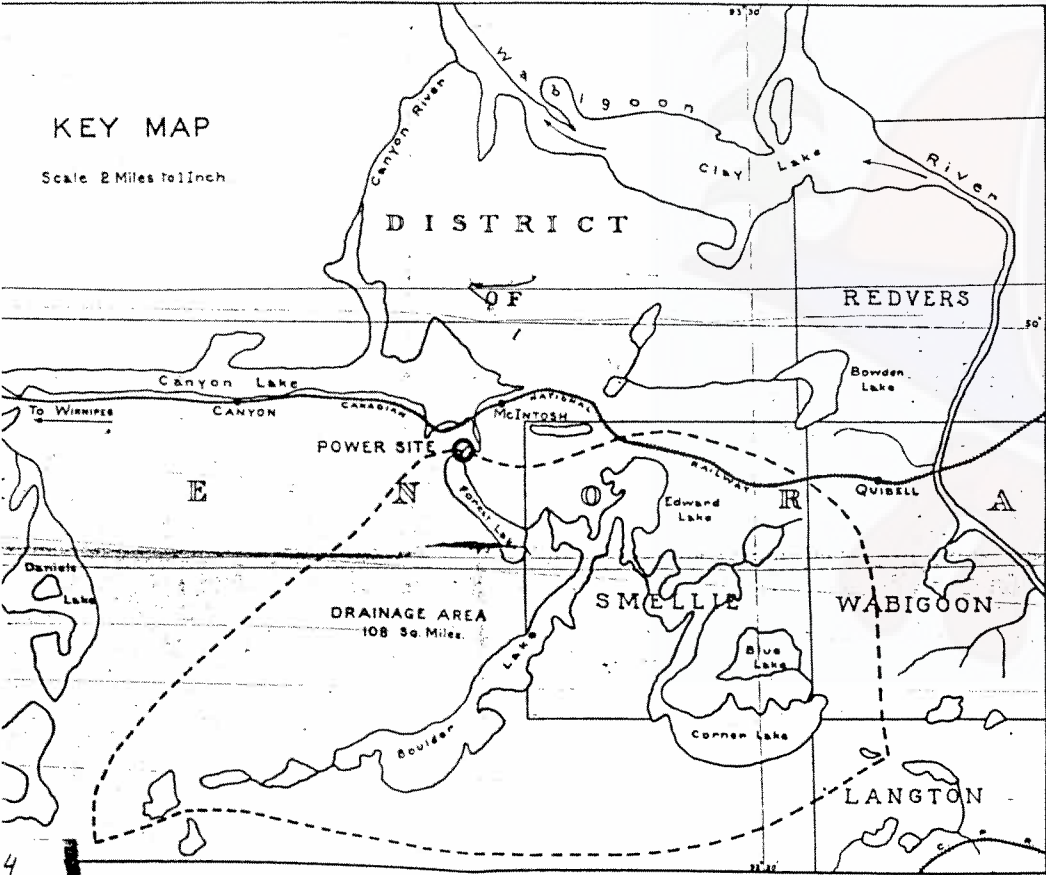
Crib

B.M.

ra positions shown thus 

### KEY MAP

Scale 2 Miles to Inch



Department of the Interior, Canada.  
 DOMINION WATER POWER BRANCH  
 J. B. CHALLIES C. E. Director.

## CANYON RIVER POWER SITE

BETWEEN  
 FOREST AND CANYON LAKES

District of Kenora  
 Ontario

Scale 20 Feet to 1 inch

WINNIPEG, MAY 1924.

  
 District Chief Engineer.



Occasional Rock Outcrops

1077

1107

1073

088.7

Platform

LC-6

978

B.M. Elev. 1000

1023

1022

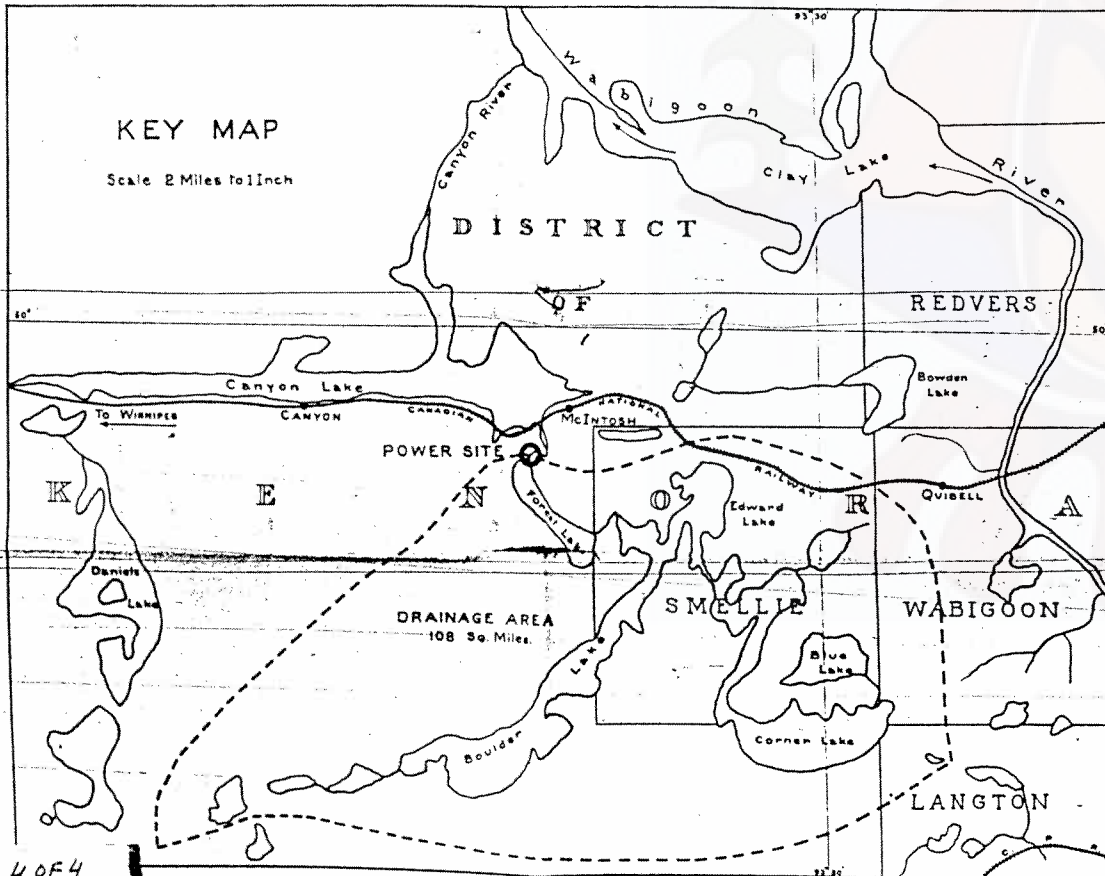
105

110

Camera positions shown thus  $\circ \rightarrow$

### KEY MAP

Scale 2 Miles to 1 Inch



Department of the Interior, Canada.  
 DOMINION WATER POWER BRANCH  
 J. B. CHALLIS, C.E. Director.

## CANYON RIVER POWER SITE

BETWEEN  
 FOREST AND CANYON LAKES

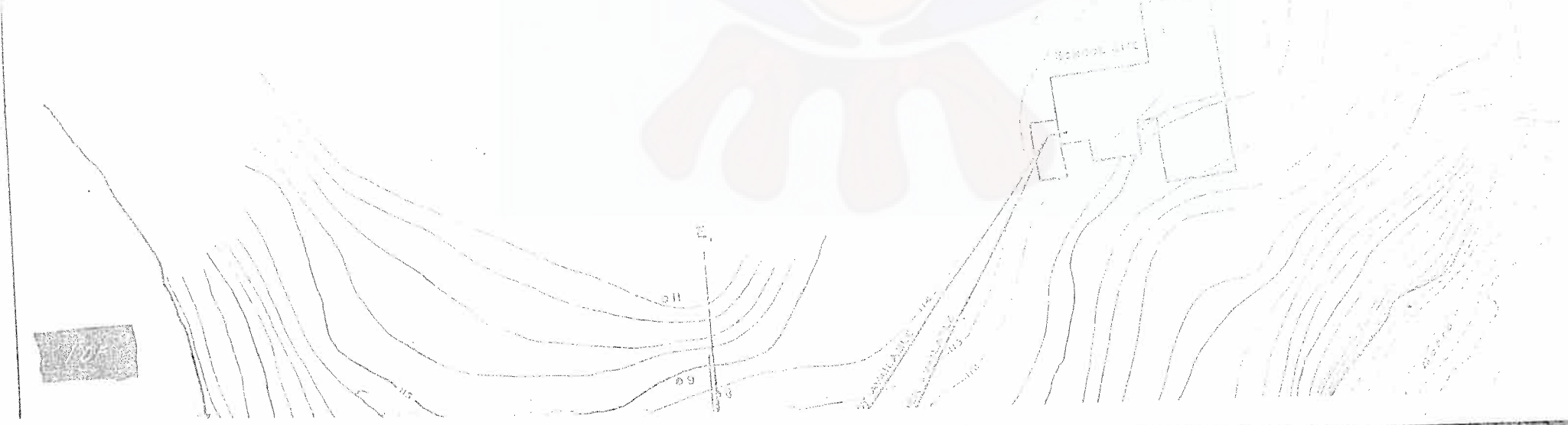
District of Kenora  
 Ontario

Scale 20 Feet to 1 Inch

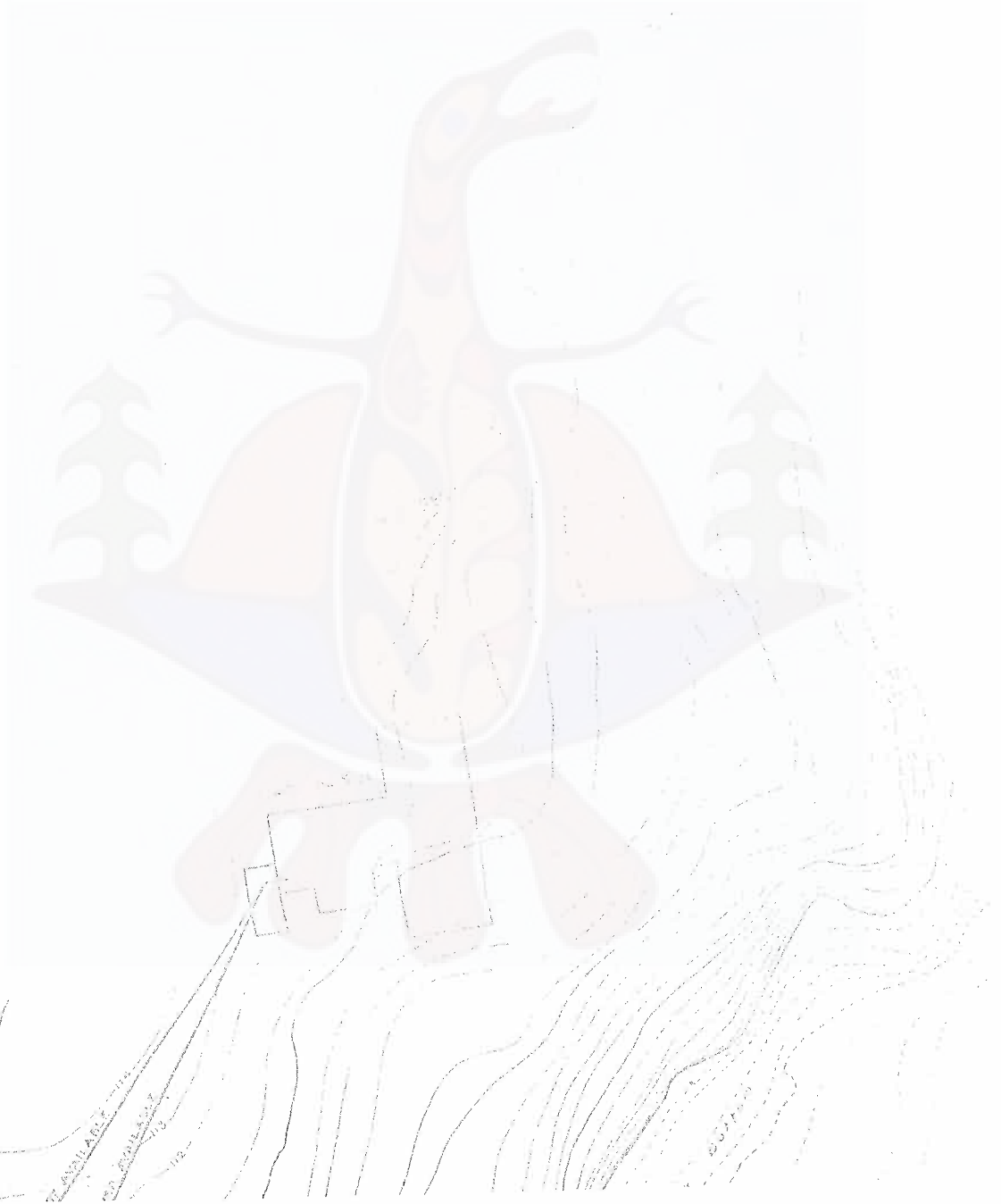
WINNIPEG, MAY 1924.

*Challis*  
 District Chief Engineer









Elevation in Feet









Elevation in Feet

100  
110  
120  
130  
140  
150  
160  
170  
180  
190  
200

Station on Line 4E

0 10 20 30 40 50 60 70 80 90 100 110 120 130 140 150 160 170 180 190 200







BORING NUMBER	GROUND ELEVATION	ROCK ELEVATION
1	109.6	109.6
2	109.7	108.0
3	109.8	109.3
4	110.2	107.3
5	111.9	108.0
6	112.2	110.4
7	112.9	112.1
8	113.0	111.6
9	114.3	112.0
10	113.0	112.6
11	119.1	119.1

BORINGS SHOWN THUS ○





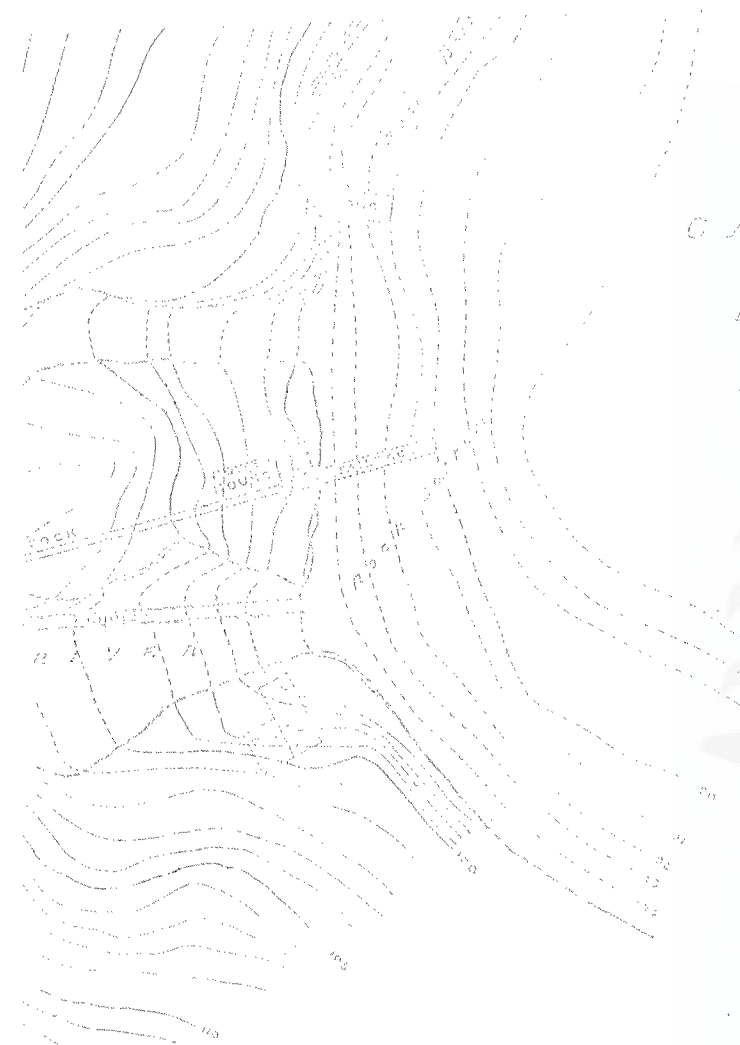
77	ELEVATION
	1055
	1050
	1045
	1040
	1035
	1030
	1025
	1020
	1015
	1010
	1005
	1000
	995
	990
	985
	980
	975
	970
	965
	960
	955
	950
	945
	940
	935
	930
	925
	920
	915
	910
	905
	900
	895
	890
	885
	880
	875
	870
	865
	860
	855
	850
	845
	840
	835
	830
	825
	820
	815
	810
	805
	800
	795
	790
	785
	780
	775
	770
	765
	760
	755
	750
	745
	740
	735
	730
	725
	720
	715
	710
	705
	700
	695
	690
	685
	680
	675
	670
	665
	660
	655
	650
	645
	640
	635
	630
	625
	620
	615
	610
	605
	600
	595
	590
	585
	580
	575
	570
	565
	560
	555
	550
	545
	540
	535
	530
	525
	520
	515
	510
	505
	500
	495
	490
	485
	480
	475
	470
	465
	460
	455
	450
	445
	440
	435
	430
	425
	420
	415
	410
	405
	400
	395
	390
	385
	380
	375
	370
	365
	360
	355
	350
	345
	340
	335
	330
	325
	320
	315
	310
	305
	300
	295
	290
	285
	280
	275
	270
	265
	260
	255
	250
	245
	240
	235
	230
	225
	220
	215
	210
	205
	200
	195
	190
	185
	180
	175
	170
	165
	160
	155
	150
	145
	140
	135
	130
	125
	120
	115
	110
	105
	100
	95
	90
	85
	80
	75
	70
	65
	60
	55
	50
	45
	40
	35
	30
	25
	20
	15
	10
	5
	0



THE  
 NATIONAL  
 ARCHIVES  
 COLLEGE PARK, MARYLAND  
 20740  
 2025 RELEASE UNDER E.O. 14176  
 1968  
 1969  
 1970  
 1971  
 1972  
 1973  
 1974  
 1975  
 1976  
 1977  
 1978  
 1979  
 1980  
 1981  
 1982  
 1983  
 1984  
 1985  
 1986  
 1987  
 1988  
 1989  
 1990  
 1991  
 1992  
 1993  
 1994  
 1995  
 1996  
 1997  
 1998  
 1999  
 2000  
 2001  
 2002  
 2003  
 2004  
 2005  
 2006  
 2007  
 2008  
 2009  
 2010  
 2011  
 2012  
 2013  
 2014  
 2015  
 2016  
 2017  
 2018  
 2019  
 2020  
 2021  
 2022  
 2023  
 2024  
 2025

Winchester, Sept. 1851.

REPRODUCED FOR DENT. BY DOD.



CANYON  
LAKE

1924  
S. B. D. 1000

Department of the Interior, Canada,  
Division Water Power & Development Service  
J. B. Christie, C.E., Director

CANYON RIVER POWER SITE

BETWEEN

FOREST AND CANYON LAKE  
District of Kenora,  
Ontario

Scale 40 Feet to One Inch

Winnipeg, Sept. 1924.

*J. B. Christie*  
Dist. Chief Engineer

PREPARED FOR DEPT. OF INDIAN AFFAIRS



10 1/2 x 5 1/2 in.  
No. 1040



10 1/2 x 5 1/2 in.

10 1/2 x 5 1/2 in.

10 1/2 x 5 1/2 in.

10 1/2 x 5 1/2 in.

10 1/2 x 5 1/2 in.

10 1/2 x 5 1/2 in.

10 1/2 x 5 1/2 in.

Top of tank  
10 1/2 x 5 1/2 in.

10 1/2 x 5 1/2 in.

10 1/2 x 5 1/2 in.

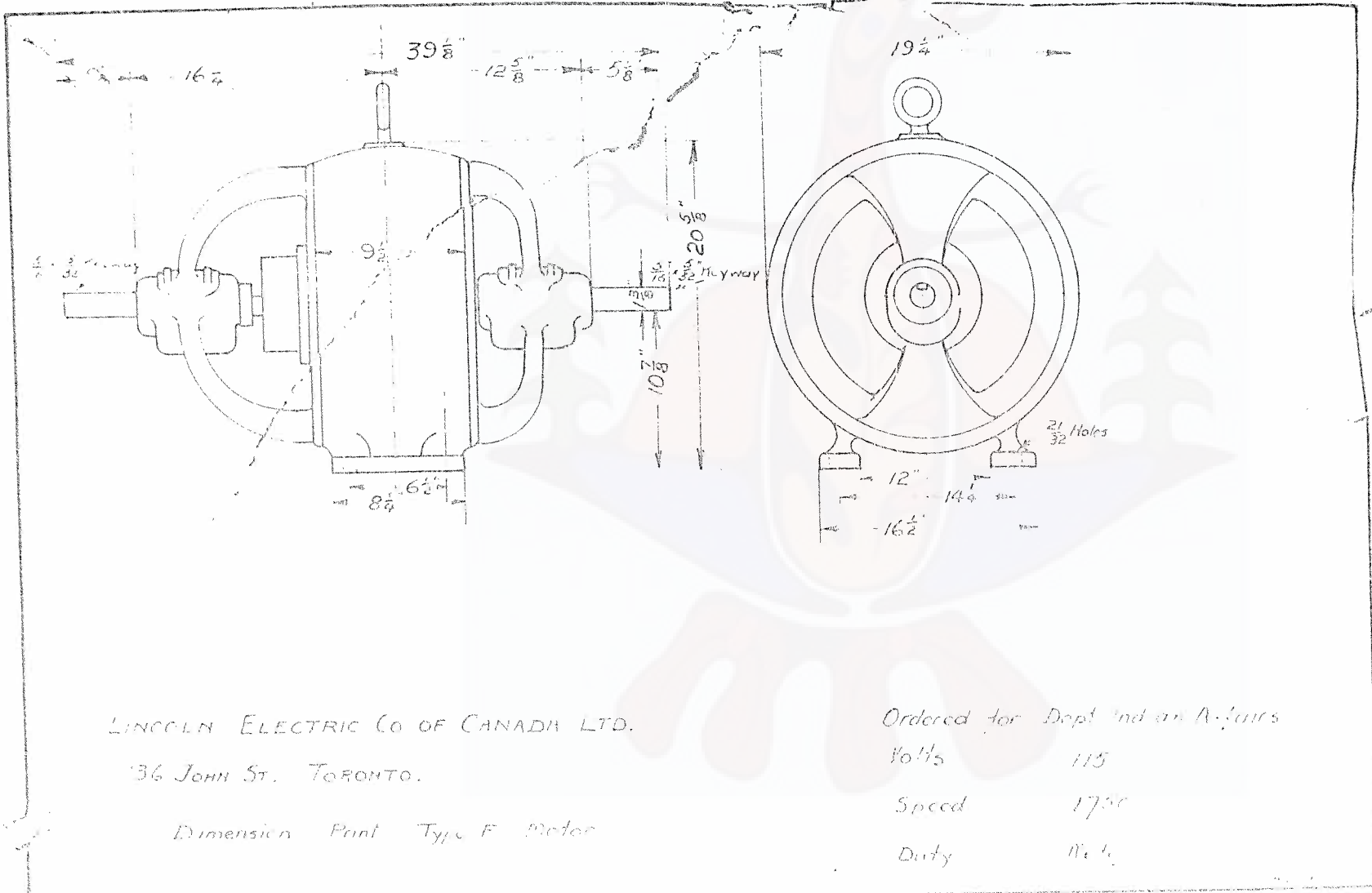
HYDRO - PNEUMATIC TANKS 48" x 102" 1040  
TEST PRESSURE 150<sup>PSI</sup> WORKING PRESSURE 75<sup>PSI</sup>

THE NATIONAL BUREAU OF STANDARDS  
U.S. DEPARTMENT OF COMMERCE

DOMINION GOVERNMENT DEPARTMENT OF INDIAN AFFAIRS	1040	550
		550







LINCOLN ELECTRIC CO OF CANADA LTD.  
 136 JOHN ST. TORONTO.


Dimension Pint Type F Motor

Ordered for Dept Ind an Affairs  
 Volts 115  
 Speed 1750  
 Duty Mot

115-110, Volume 601, 57-172-16, part 11  
 PUBLIC ARCHIVES  
 ARCHIVES PUBLIQUES

Indian Affairs  
School Files

(RG 10, Volume 6221)

File 472-10, part 4	Kenora Agency - McIntosh Residential School - Roman Catholic - Admissions & Discharges. 1941 - 1947.
 File 472-16, part 1	Kenora Agency - McIntosh Residential School - Roman Catholic - Hydro Plant and Water Supply System (plans, Maps, Photo). 1924 - 1925.
File 472-16, part 2	Kenora Agency - McIntosh Residential School - Roman Catholic - Hydro Plant and Water Supply System. 1925 - 1926.
File 472-16, part 3	Kenora Agency - McIntosh Residential School - Roman Catholic - Hydro Plant and Water Supply System. 1926 - 1929.
File 472-16, part 4	Kenora Agency - McIntosh Residential School - Roman Catholic - Hydro Plant and Water Supply System (Plans, Maps). 1930 - 1937.
File 472-23, part 1	Kenora Agency - McIntosh Residential School - Roman Catholic - Deaths of Pupils. 1936 - 1939.



Return of Labour on the MANTOSH INDIAN RESIDENTIAL SCHOOL

For week ended March 14th 1925 192

All payments to be made in presence of person signing as witness.

Carpenter . Re- Building Furniture. (Equipment.)

NAMES	Mon.	Tues.	Wed.	Thur.	Fri.	Sat.	No. days	Price per day	Amount of wages	RECEIVED PAYMENT	
							Hrs.				
Linde E.	Days....						14			\$ .cts.	
						9	9	.80	7.20	E Linde	
For week ended MARCH 21. 1925.											
	Days... 16 17 18 19 20 21										
Linde E.	10	12	11	10	10	10	63	.80	50.40	E Linde	
For week ended MARCH 28th 1925.											
	Days.. 23 24 25 26 27 28										
Linde E.	10	10	10	10	10	10	60	.80	48.00	E Linde	
For week ended APRIL 4th 1925.											
	Days.. 30 31 1 2 3 4										
Linde E.	-	-	9	10	10	5	34	.80	27.20	E Linde	
Total:-									\$132.80		

Cheque No.....

Balance.....

WITNESS:

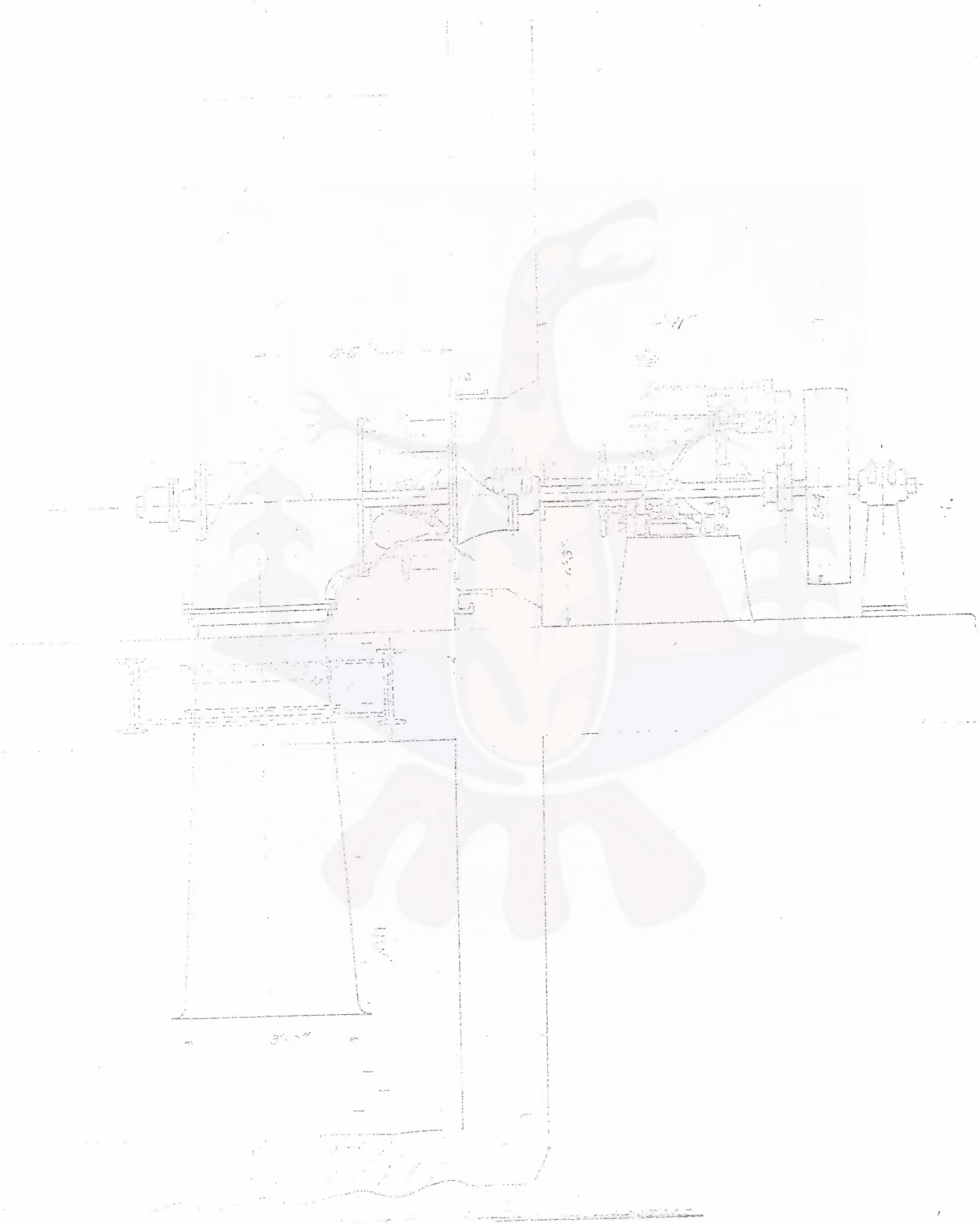
I hereby certify that the services have been performed and that the prices are fair and just.

*[Signature]*

Agent.

Indian Affairs. (RG 10, Volume 6221, file 472-16, part 2)


PUBLIC ARCHIVES  
ARCHIVES PUBLIQUES  
CANADA





Indian Affairs  
School Files

(RG 10, Volume 6221)

File 472-10, part 4	Kenora Agency - McIntosh Residential School - Roman Catholic - Admissions & Discharges. 1941 - 1947.
 File 472-16, part 1	Kenora Agency - McIntosh Residential School - Roman Catholic - Hydro Plant and Water Supply System (plans, Maps, Photo). 1924 - 1925.
File 472-16, part 2	Kenora Agency - McIntosh Residential School - Roman Catholic - Hydro Plant and Water Supply System. 1925 - 1926.
File 472-16, part 3	Kenora Agency - McIntosh Residential School - Roman Catholic - Hydro Plant and Water Supply System. 1926 - 1929.
File 472-16, part 4	Kenora Agency - McIntosh Residential School - Roman Catholic - Hydro Plant and Water Supply System (Plans, Maps). 1930 - 1937.
File 472-23, part 1	Kenora Agency - McIntosh Residential School - Roman Catholic - Deaths of Pupils. 1936 - 1939.



Return of Labour on the MCINTOSH INDIAN RESIDENTIAL SCHOOL

For week ended March 14th 1925 192

All payments to be made in presence of person signing as witness.

Carpenter . Re- Building Furniture. (Equipment.)

NAMES	Mon.	Tue.	Wed.	Thur.	Fri.	Sat.	No. days	Price per day	Amount of wage	RECEIVED PAYMENT	
											Hrs.
Linde E.	Days....						<u>14</u>		\$ .ots.		
							9	9	.80	7.20	<i>E Linde</i>
For week ended MARCH 21. 1925.											
	Days... <u>16 17 18 19 20 21</u>										
Linde E.	10	12	11	10	10	10	63	.80	50.40	<i>E Linde</i>	
For week ended MARCH 28th 1925.											
	Days.. <u>23 24 25 26 27 28</u>										
Linde E.	10	10	10	10	10	10	60	.80	48.00	<i>E Linde</i>	
For week ended APRIL 4th 1925.											
	Days.. <u>30 31 1 2 3 4</u>										
Linde E.	-	-	9	10	10	5	34	.80	27.20	<i>E Linde</i>	
Total:-									<u>\$132.80</u>		

Cheque No.....

Balance.....

WITNESS:

I hereby certify that the services have been performed and that the prices are fair and just.

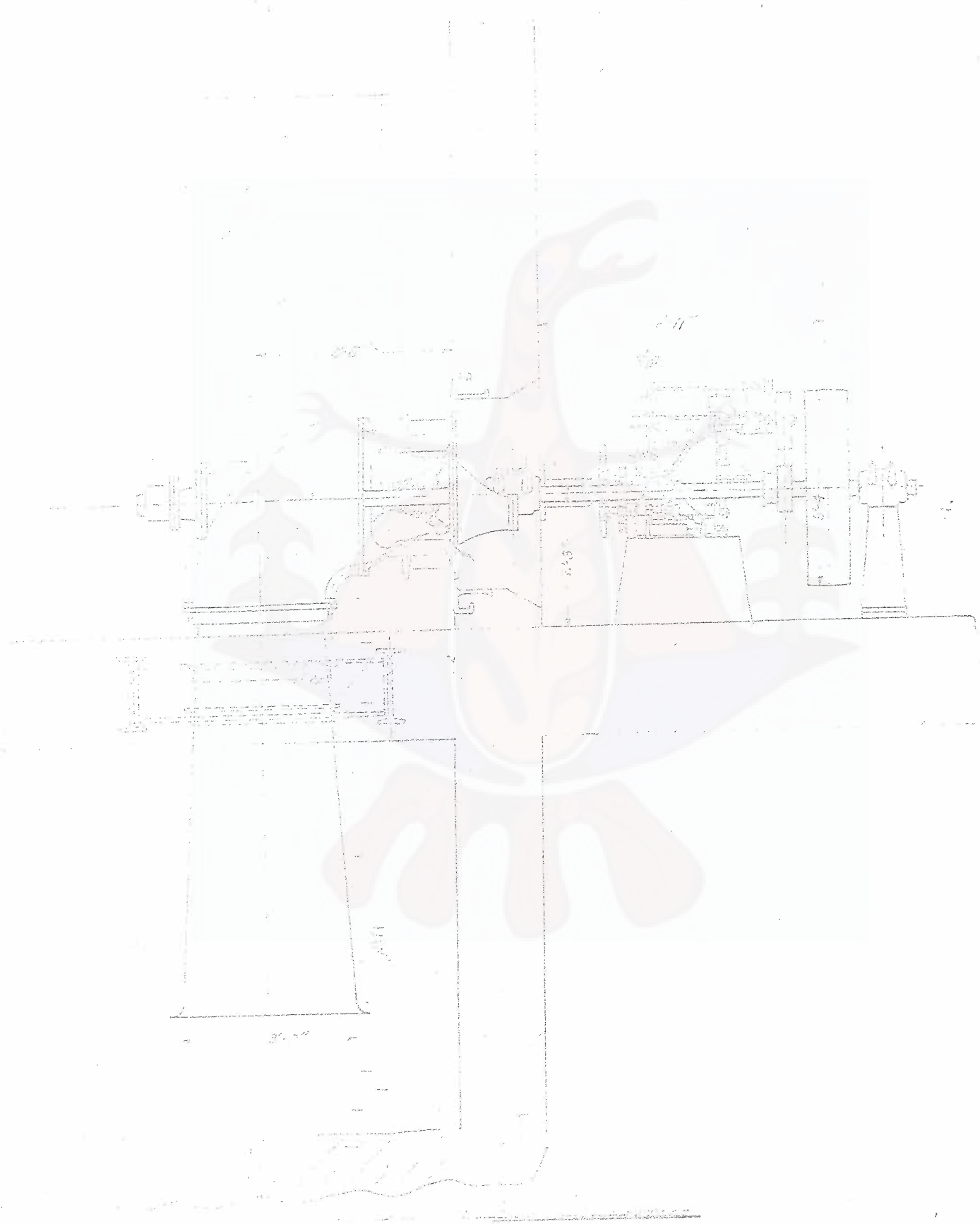
*[Signature]*

April

Indian Affairs. (RG 10, Volume 6221, file 472-16, part 2)

PUBLIC ARCHIVES  
ARCHIVES PUBLIQUES  
CANADA

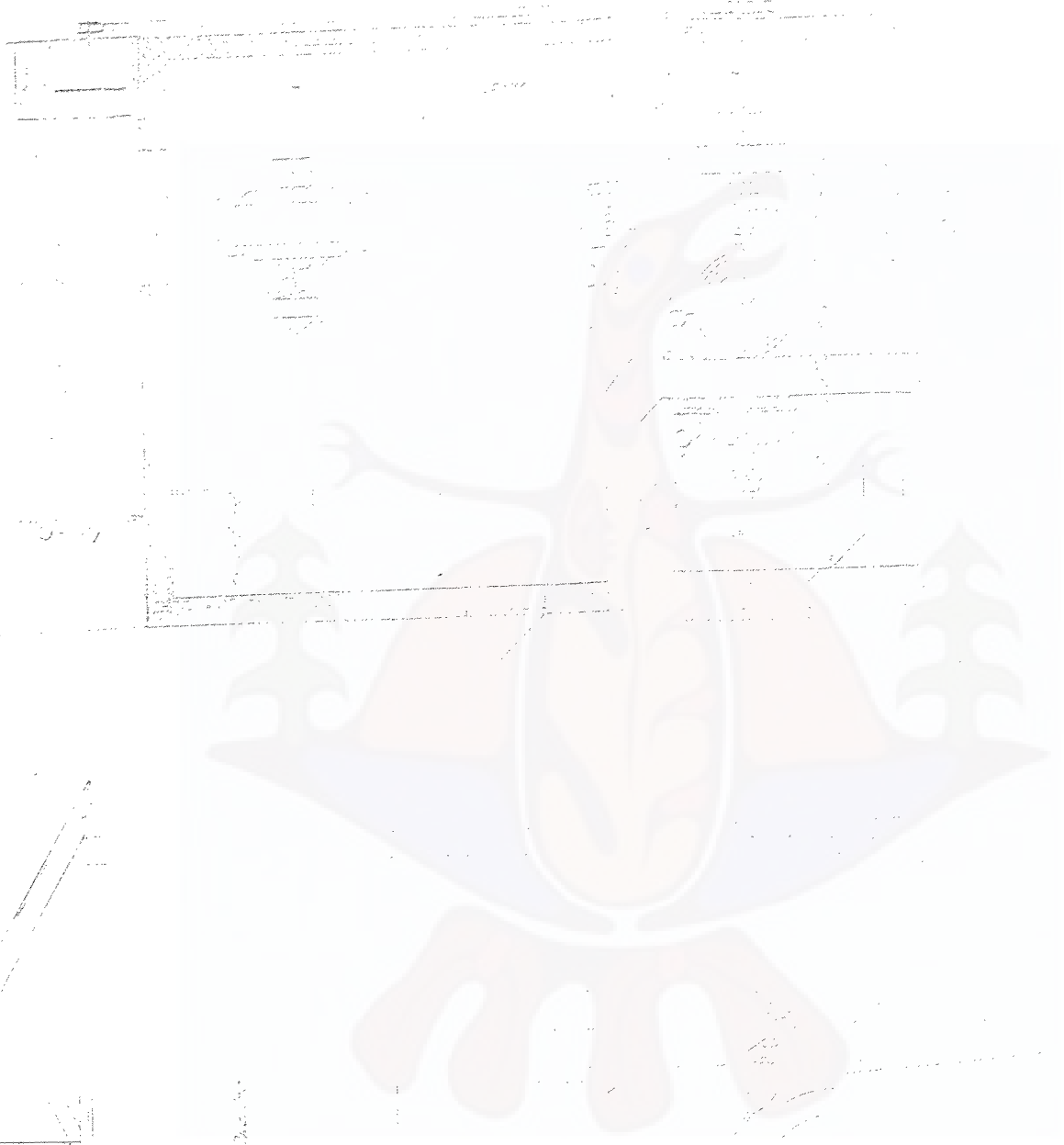




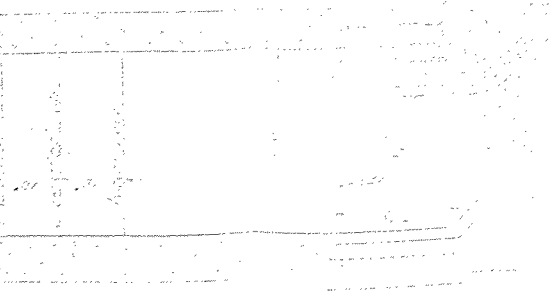








Support of bracket








Indian Affairs  
School Files

(RG 10, Volume 6221)

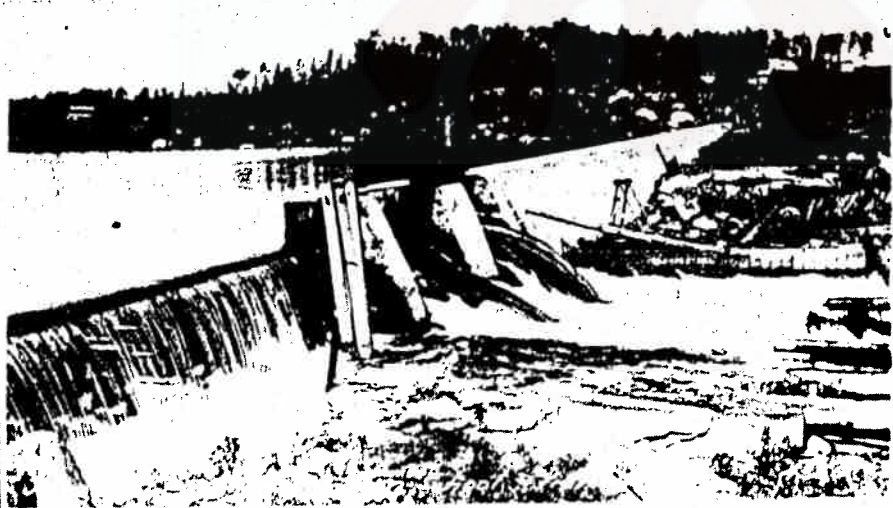
File 472-10, part 4	Kenora Agency - McIntosh Residential School - Roman Catholic - Admissions & Discharges. 1941 - 1947.
File 472-16, part 1	Kenora Agency - McIntosh Residential School - Roman Catholic - Hydro Plant and Water Supply System (plans, Maps, Photo). 1924 - 1925.
File 472-16, part 2	Kenora Agency - McIntosh Residential School - Roman Catholic - Hydro Plant and Water Supply System. 1925 - 1926.
 File 472-16, part 3	Kenora Agency - McIntosh Residential School - Roman Catholic - Hydro Plant and Water Supply System. 1926 - 1929.
File 472-16, part 4	Kenora Agency - McIntosh Residential School - Roman Catholic - Hydro Plant and Water Supply System (Plans, Maps). 1930 - 1937.
File 472-23, part 1	Kenora Agency - McIntosh Residential School - Roman Catholic - Deaths of Pupils. 1936 - 1939.







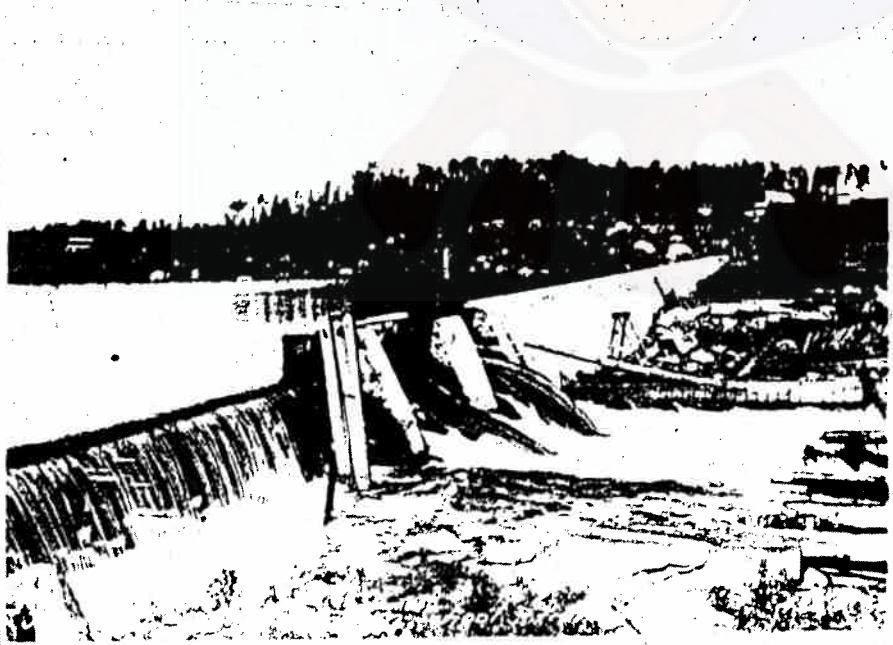
4386  
View of the bridge at  
high water level







2386  
Flow of Re. Kieda out  
on high water channel



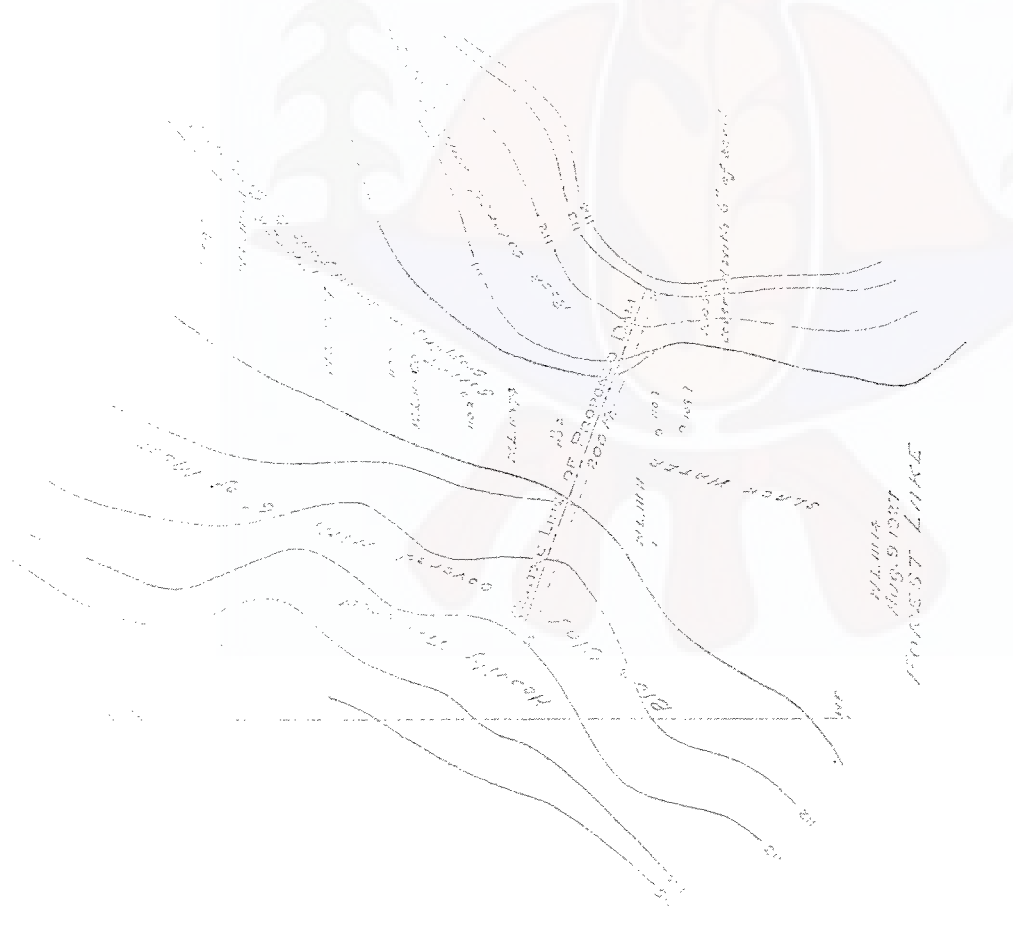


1927  
Melmash Indian School  
View of Penhook lab



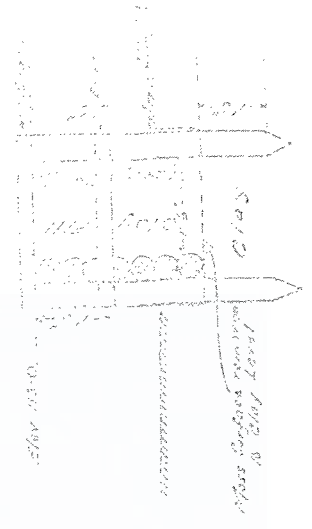
June 1927 Melmash Indian School  
View of Penhook and River House. 4348





PLANNED  
AUG. 9 1937  
CONCRETE DAM

DETAIL OF HIGH WATER CHANNEL  
AT  
PROPOSED DAM SITE  
Scale 50' to 1"



SECTION  
Detail of Clay Fill Timber Dam



PLANNED  
AUG. 9 1937  
CONCRETE DAM

File-5602r.



ONTARIO  
DEPARTMENT OF SURVEYS  
OFFICE OF SURVEYOR GENERAL

TORONTO,  
JULY 24,  
1929.

-2-

No person has any right to occupy Crown lands or construct a dam without obtaining (according to Statutes) the necessary permission from the Crown, as represented by this Department. I am assuming that the school authorities acted without the permission of your Department, but as the lands were vested for school purposes only, it is necessary that you be advised that action be taken to clean up the damage which has been done by flooding the shores of the lakes, and also that if it is necessary to maintain and operate a water-power to this extent, a lease must be obtained from this Department for such purposes, under the usual terms.

Our Inspector also reports that the method of clearing land in the vicinity of the school has not been carried out very satisfactorily, that instead of culling the timber and making a park near the school, they have cut down all tree-growth, making an unsightly waste, probably in excess of fire protection requirements.

The land which is now being applied for contains one of the best stands of timber in that vicinity, about 50% Jackpine, and 10% Spruce, and the Inspector was informed that

(J. D. McLean, Esq.)

Indian Affairs. (RG 10, Volume 6221, file 472-16, part 3)

PUBLIC ARCHIVES  
ARCHIVES PUBLIQUES  
CANADA



Water Power Development at the  
McIntosh Indian Residential School,  
McIntosh, Ontario

History of Development.

In 1924 the Department of Indian Affairs decided to erect a residential school for Indian boys near McIntosh, Ontario, the school when completed to be conducted by the Roman Catholic Mission for Eastern Manitoba and Northwestern Ontario. The site selected bordered on Forest and Canyon lakes on provincial Crown lands. Application was made to the Ontario Department of Lands and Forests for the lands selected, and after some exchange of correspondence, an area of about 330 acres was sold to the Department of Indian Affairs under authority of an order of the Executive Council dated October 2nd, 1924.

One of the chief reasons for the selection of the site chosen was the existence of a natural water-power due to the difference in level between Forest and Canyon lakes. The Mission authorities were most anxious to have this water-power used to supply the electric energy needed at the school for lighting, pumping water and general purposes and the Indian Department agreed to pay for the cost of developing the power so as to provide a dependable supply which could be readily maintained and operated by the school authorities.

In order to carry out the development, the Indian Department requested the Director of Water Power and Reclamation of the Department of the Interior to have surveys made and plans and specifications prepared to determine the extent of the power and the best method of development. This was accordingly done, the plans submitted were approved and work was begun in November 1924, but owing to the difficulty of constructing the concrete dam in winter and to other unavoidable delays, the development was not completed until June 1926.

The intention of the Indian Department to develop this power site was communicated to the Department of Lands and Forests and the method of development by which it was proposed to raise the natural level of Forest lake about three feet in order to maintain a dependable flow of 25 c.f.s. was described by Mr. J.D. McLean, Assistant Deputy and Secretary of the Indian Department, in his letter of August 21st, 1924 to the Deputy Minister of Lands and Forests.

No objection was taken by the Department of Lands and Forests to this proposal and the development was carried out in good faith by the Indian Department solely for the benefit of the Indian school. As was pointed out by the District Chief Engineer of the

Dominion Water Power and Reclamation Service in submitting his report on the proposed development, a fuel generating plant giving an equal amount of power could have been installed at much less cost, and the water-power development was decided upon only on account of the urgent requests of the Mission authorities.

Description of Development.

The water-power development at the McIntosh Indian school is situated on the short stretch of river separating Forest and Canyon lakes, the natural head available being about 11 or 12 feet. During earlier years a timber and rock dam was built across the outlet of Forest lake to assist in lumbering operations by raising the lake level, and the water in Forest lake and the connecting lakes above it has thus been raised above the natural level at intervals for a number of years past.

In the plan of development as carried out, the assumed natural high water level of Forest lake was raised a maximum of 2.5 feet, partly to obtain storage to give a continuous minimum flow of 25 c.f.s. but also to obtain a sufficient depth of water at the intake to the penstock and so avoid expensive rock excavation which would otherwise be necessary to ensure a seal at the intake structure. The maximum head available is about 17 feet, the minimum 14 and the power available is 33 horse-power.

The works as constructed consist of a concrete dam about 10 feet high at the highest part and 330 feet long on rock foundation with spillway and non-overflow section, the latter containing an opening for a log chute and a sluiceway for discharging flood waters, intake works, wood stave penstock 3 feet diameter, and 312 feet long, power house 20 X 25 feet with workshop above, and tailrace, details as shown on the accompanying plans.

The machinery in the power house consists of a single horizontal turbine, 30 B.H.P. under 15 feet head at 450 R.P.M. with Woodward governor supplied by Boving Hydraulic and Engineering Company of Lindsay, Ontario; D.C. generator, 17½ K.W. belt driven from turbine supplied by Lincoln Electric Company of Toronto, Ontario; switchboard and accessories.



Water Power Development at the  
McIntosh Indian Residential School,  
McIntosh, Ontario

History of Development.

In 1924 the Department of Indian Affairs decided to erect a residential school for Indian boys near McIntosh, Ontario, the school when completed to be conducted by the Roman Catholic Mission for Eastern Manitoba and Northwestern Ontario. The site selected bordered on Forest and Canyon lakes on provincial Crown lands. Application was made to the Ontario Department of Lands and Forests for the lands selected, and after some exchange of correspondence, an area of about 330 acres was sold to the Department of Indian Affairs under authority of an order of the Executive Council dated October 2nd, 1924.

One of the chief reasons for the selection of the site chosen was the existence of a natural water-power due to the difference in level between Forest and Canyon lakes. The Mission authorities were most anxious to have this water-power used to supply the electric energy needed at the school for lighting, pumping water and general purposes and the Indian Department agreed to pay for the cost of developing the power so as to provide a dependable supply which could be readily maintained and operated by the school authorities.

In order to carry out the development, the Indian Department requested the Director of Water Power and Reclamation of the Department of the Interior to have surveys made and plans and specifications prepared to determine the extent of the power and the best method of development. This was accordingly done, the plans submitted were approved and work was begun in November 1924, but owing to the difficulty of constructing the concrete dam in winter and to other unavoidable delays, the development was not completed until June 1926.

The intention of the Indian Department to develop this power site was communicated to the Department of Lands and Forests and the method of development by which it was proposed to raise the natural level of Forest lake about three feet in order to maintain a dependable flow of 25 c.f.s. was described by Mr. J.D. McLean, Assistant Deputy and Secretary of the Indian Department, in his letter of August 21st, 1924 to the Deputy Minister of Lands and Forests.

No objection was taken by the Department of Lands and Forests to this proposal and the development was carried out in good faith by the Indian Department solely for the benefit of the Indian school. As was pointed out by the District Chief Engineer of the

Dominion Water Power and Reclamation Service in submitting his report on the proposed development, a fuel generating plant giving an equal amount of power could have been installed at much less cost, and the water-power development was decided upon only on account of the urgent requests of the Mission authorities.

Description of Development.

The water-power development at the McIntosh Indian school is situated on the short stretch of river separating Forest and Canyon lakes, the natural head available being about 11 or 12 feet. During earlier years a timber and rock dam was built across the outlet of Forest lake to assist in lumbering operations by raising the lake level, and the water in Forest lake and the connecting lakes above it has thus been raised above the natural level at intervals for a number of years past.

In the plan of development as carried out, the assumed natural high water level of Forest lake was raised a maximum of 2.5 feet, partly to obtain storage to give a continuous minimum flow of 25 c.f.s. but also to obtain a sufficient depth of water at the intake to the penstock and so avoid expensive rock excavation which would otherwise be necessary to ensure a seal at the intake structure. The maximum head available is about 17 feet, the minimum 14 and the power available is 33 horse-power.

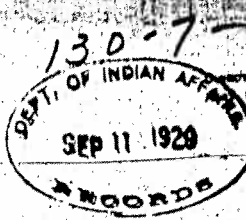
The works as constructed consist of a concrete dam about 10 feet high at the highest part and 330 feet long on rock foundation with spillway and non-overflow section, the latter containing an opening for a log chute and a sluiceway for discharging flood waters, intake works, wood stave penstock 3 feet diameter, and 312-foot long, power house 20 X 25 feet with workshop above, and tailrace, details as shown on the accompanying plans.

The machinery in the power house consists of a single horizontal turbine, 30 B.H.P. under 15 feet head at 450 R.P.M. with Woodward governor supplied by Boving Hydraulic and Engineering Company of Lindsay, Ontario; D.C. generator, 17½ K.W. belt driven from turbine supplied by Lincoln Electric Company of Toronto, Ontario; switchboard and accessories.



PLEASE ADDRESS YOUR REPLY TO  
THE DIRECTOR OF  
WATER POWER AND RECLAMATION  
SERVICE  
DEPT. OF THE INTERIOR  
OTTAWA, CANADA

MFC:LM



DIRECTOR, J. T. JOHNSON, C.E., M.E.I.C.  
DIRECTOR, V. MEEK, B.Sc., M.E.I.C.

PLEASE REFER TO ONE SUBJECT IN A  
LETTER, AND IN YOUR REPLY QUOTE  
FILE NO. 40103-W

DEPARTMENT OF THE INTERIOR  
CANADA  
DOMINION WATER POWER AND RECLAMATION SERVICE

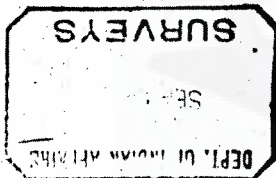
OTTAWA, ONT., September 9th, 1929.

1 *[Signature]*  
2  
Sir. Architect

Your file number: 130-7-16.

In further reference to my letter of August 19th, I enclose herewith material for the use of your Department in making application to the Ontario Department of Lands and Forests for an authorization covering the water-power development at the McIntosh Indian residential school, as it appears desirable, in order to settle the outstanding difficulties with the Ontario Government, that a form of authorization should be issued defining the rights of the Indian Department in regard to this development. The material, which is in duplicate, consists of -

- (1) Plans showing the development as constructed (under separate cover);
- (2) Statement outlining the history of the development and giving a description of the works and machinery (marked A hereunder);
- (3) Summary of the negotiations between the Department of Indian Affairs and the Ontario Department of Lands and Forests from material supplied by the Indian Department (marked B hereunder).



In forwarding this application it might be well for the Department of Indian Affairs to explain its side of the question in view of the complaints made by Mr. Rorke, Surveyor General, in his letters of July 4th, 1928 and July 24th, 1929 and for that purpose the summary marked B may be useful. Regarding the letter of July 4, 1928 a reply was sent from this Department to Mr. Rorke dated October 6th, 1928, copy attached marked C hereunder, which was intended to meet the questions raised at that time, and the summary marked B deals more particularly with the correspondence, copies of which have been received from the Indian Department.

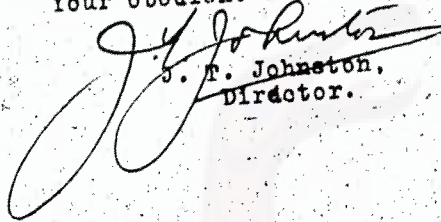
It is assumed, however, that the Indian Department, having made its position clear, will be quite ready now to supply any available information which may be requested by the Department of Lands and Forests and to

J. D. McLean,  
Assistant Deputy and Secretary,  
Department of Indian Affairs.

2.

comply with reasonable conditions as to the control of lake levels, in return for a formal authorization covering the water-power development to be granted by the Ontario Government in accordance with the understanding distinctly implied in its previous correspondence with the Indian Department.

Your obedient servant,

  
J. F. Johnston,  
Director.



Indian Affairs  
School Files

(RG 10, Volume 6221)

File 472-10, part 4

Kenora Agency - McIntosh Residential  
School - Roman Catholic - Admissions  
& Discharges. 1941 - 1947.

File 472-16, part 1

Kenora Agency - McIntosh Residential  
School - Roman Catholic - Hydro Plant  
and Water Supply System (plans, Maps,  
Photo). 1924 - 1925.

File 472-16, part 2

Kenora Agency - McIntosh Residential  
School - Roman Catholic - Hydro Plant  
and Water Supply System. 1925 - 1926.

File 472-16, part 3

Kenora Agency - McIntosh Residential  
School - Roman Catholic - Hydro Plant  
and Water Supply System. 1926 - 1929.

File 472-16, part 4

Kenora Agency - McIntosh Residential  
School - Roman Catholic - Hydro Plant  
and Water Supply System (Plans, Maps).  
1930 - 1937.

File 472-23, part 1

Kenora Agency - McIntosh Residential  
School - Roman Catholic - Deaths of  
Pupils. 1936 - 1939.

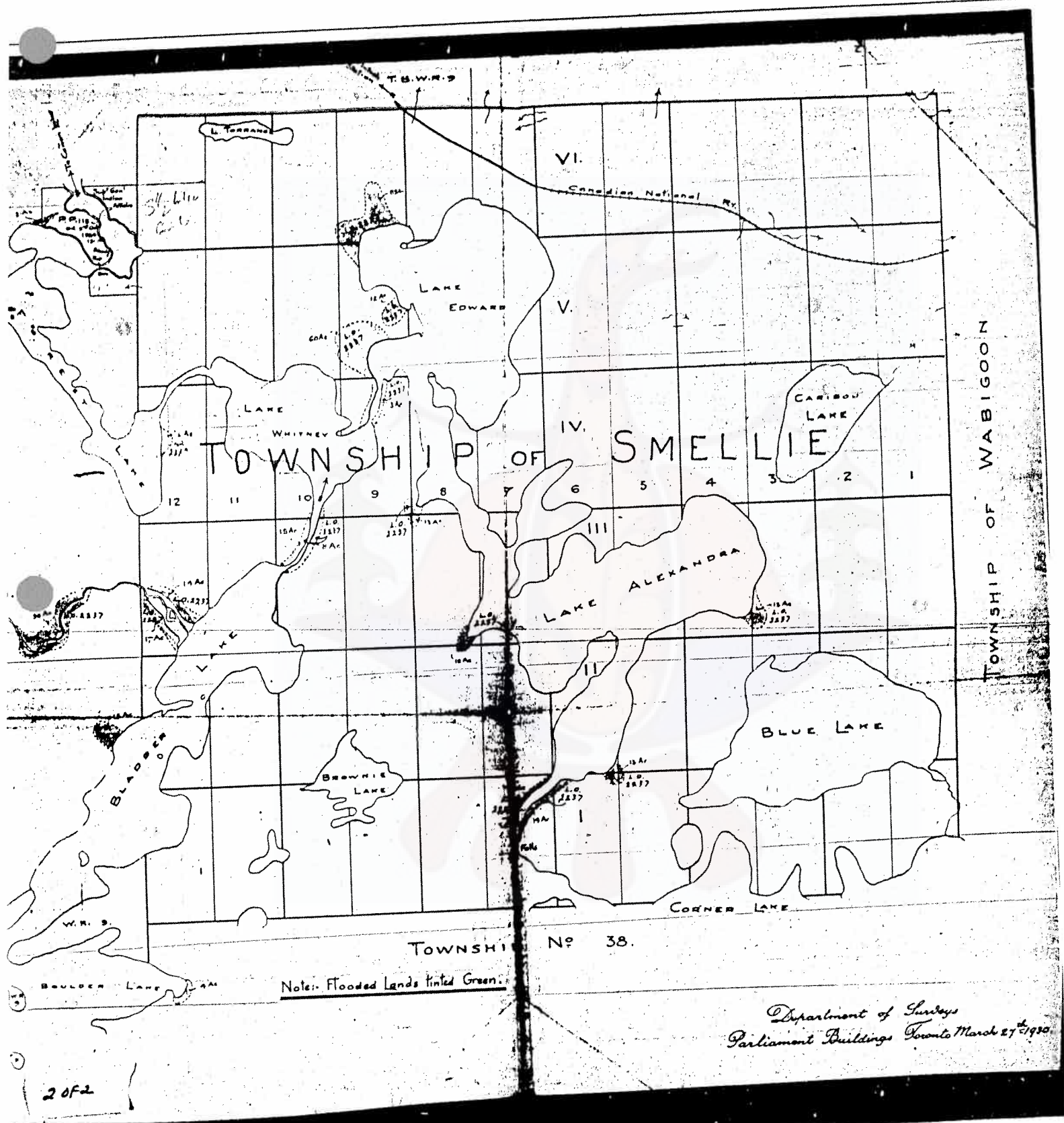












Note: Flooded Lands hatched Green.

Department of Surveys  
Parliament Buildings Toronto March 27<sup>th</sup> 1930

2 of 2

Ottawa, September 30, 1935.

Sir:

I beg to acknowledge receipt of your letter of the 23rd instant, with further reference to the application of Rev. J. O. Plourde, on behalf of the Oblate Fathers, for an area of land, containing approximately 400 acres, in the District of Kenora.

The parcel referred to in your letter as PP. 115, together with the S.  $\frac{1}{2}$  Lot 12, Con. 6, Township of Smellie, was purchased by this Department and transferred to the Department by the Province by Order-in-Council dated 2nd October, 1924.

This Department would have no objection to the purchase by the Oblate Fathers of the land north of the area owned by this Department. It should be understood, however, that we would not be responsible for payment of any part of the purchase price or any other expenses in connection therewith.

It should be further understood that, in selling land to the Oblate Fathers, you would ensure that access to the railroad would be available from the property owned by this Department and used for the purpose of the McIntosh Indian Residential School.

Your obedient servant,

*C. C. Parker*  
C. C. Parker,  
Acting Secretary.

*C. H. Fullerton*  
C. H. Fullerton, Esq.,  
Surveyor General,  
Department of Surveys,  
Toronto, Ont.





OFFICE OF THE  
DIRECTOR

CANADA  
DEPARTMENT  
OF  
MINES AND RESOURCES

SURVEYS AND  
ENGINEERING BRANCH

June 28, 1937.

*Mr. J.H.*  
Memorandum:

Mr. MacInnes,  
Acting Director, Indian Affairs.

I am attaching herewith, for your information, copy of a report covering an engineering inspection by Mr. J.T. Rose of the Dominion Water and Power Bureau at Winnipeg on the dam of the hydro-electric plant at McIntosh Indian School. You will note from the report, which has been forwarded me by Mr. Mills, that the deterioration of the concrete work has been rapid owing to poor aggregate and to the fact that much of the cement was poured during the winter months in 1925.

Mr. Rose estimates the repair work will cost \$900 and, in the opinion of Mr. Mills, \$1,000 should be made available for the work. As you are aware, no funds have been transferred to this Branch for undertaking this particular project and as the repair work seems very necessary, I would suggest you make the required amount available to us or authorize the Treasury Department to honour expenditure for wages and material that will be incurred by our engineer on the repair work, up to \$1,000.

Will you kindly advise me as soon as possible so that we can make early arrangements to have the work done.

*J. Wardle*

Director.