

Indian Affairs
School Files

(RG 10, Volume 6214)

File 469-12, part 1

Caradoc Agency - Shingwauk Residential
School - Church of England - Supplies
- Accounts. 1917 - 1936.

File 469-13, part 1

Caradoc Agency - Shingwauk Residential
School - Church of England - Medical
Matters - Supplies - Accounts. 1911 -
1933.

File 469-13, part 2

Caradoc Agency - Shingwauk Residential
School - Church of England - Medical
Matters - Supplies - Accounts. 1933 -
1946.

File 469-14, part 1

Caradoc Agency - Shingwauk Residential
School - Church of England - Livestock.
1925 - 1946.

File 469-17, part 1

Caradoc Agency - Shingwauk Residential
School - Church of England - Cadet Corps
& Band. 1928.

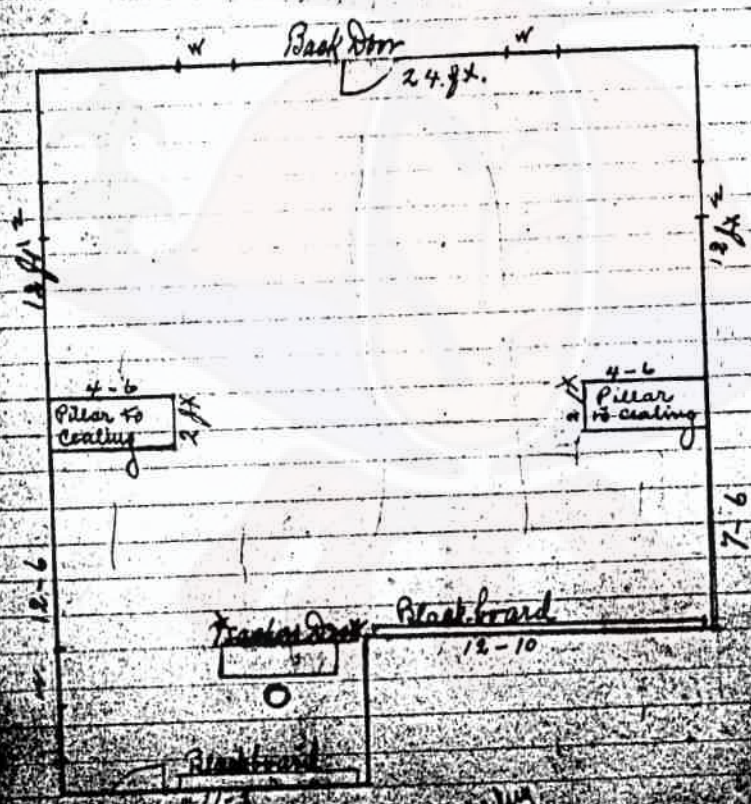
File 469-23, part 1

Caradoc Agency - Shingwauk Residential
School - Church of England - Death. 1936
- 1944.

File 470-2, part 1

Kenora Agency - Sioux-Lookout Residential
School - Church of England - Quarterly
Returns. 1946 - 1950.

Indian Affairs. (RG 10, Volume 6214, file 469-12, part 1)

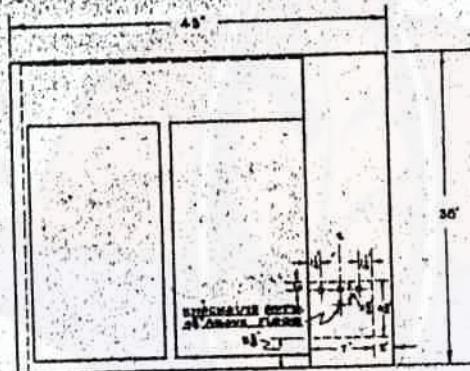


Indian Affairs. (RG 10, Volume 6214, file 469-12, part 1)

PUBLIC ARCHIVES
ARCHIVES PUBLIQUES
CANADA

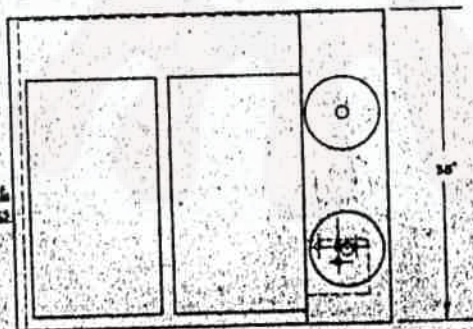
HEAVY DUTY ELECTRIC RANGES.

NO 20
CAPACITY
10 AMPS @ 220 V
2 WIRE SERVICE



PLAN OF NO 20

NO 29
CAPACITY
20 AMPS @ 220 V
NO 220-3 WIRE SERVICE
THE APPLIANCE ILLUMINATES
FIELD FOR 110 VOLTS



PLAN OF NO 29