

Indian Affairs
School Files

(RG 10, Volume 6213)

File 469-5, part 5

Caradoc Agency - Shingwauk Residential School
- Church of England - Building Maintenance -
Accounts - Supplies - Principal's Res. 1935
- 1937.

File 469-5, part 6

Caradoc Agency - Shingwauk Residential School
- Church of England - Building Maintenance -
Supplies - Accounts. 1935 - 1937.

File 469-5, part 7

Caradoc Agency - Shingwauk Residential School
- Church of England - Building Maintenance -
Supplies - Accounts. 1939 - 1944.

File 469-5, part 8

Caradoc Agency - Shingwauk Residential School
- Church of England - Building Maintenance -
Supplies - Accounts - General Administration.
1945 - 1949.

File 469-5X, part 1

Caradoc Agency - Shingwauk Residential School
- Church of England - Appointment of Inspector
of Construction. 1906 - 1936.

File 469-9, part 1

Caradoc Agency - Shingwauk Residential School
- Church of England - School Land (Plan, Map)
- General Administration. 1927 - 1942.

Indian Affairs. (RG 10, Volume 6213, file 469-5, part 5)

PUBLIC ARCHIVES
ARCHIVES PUBLIQUES
CANADA

SHINGWAWK INDIAN RESIDENTIAL SCHOOL
SAULT STE. MARIE, ONT.

REV. C. F. HIVES
PRINCIPAL

Jan. 21, 1937.

Dear Mr Orr:

I have just measured up the playrooms and wash rooms in the basement, and find that there are approximately 4500 sq. ft. of wall to paint.

For two coat job this would take about 13 gals. and sizing about 10.00. The total cost would be for 100% pure interior paint.

13 gals.	39.00
Sizing	10.00
Brushes.	7.00
	<hr/>
	56.00

I am enclosing a color card, and would be glad to receive word from you as soon as possible, so that if it is your wish that we should proceed with the work, we may do so as soon as possible.

Yours faithfully.

Chas. F. Hives
Principal.

Mr R. Gurney Orr,
Architect,
Department of Indian Affairs,
Ottawa.

Indian Affairs
School Files

(RG 10, Volume 6213)

File 469-5, part 5

Caradoc Agency - Shingwauk Residential School
- Church of England - Building Maintenance -
Accounts - Supplies - Principal's Res. 1935
- 1937.

File 469-5, part 6

Caradoc Agency - Shingwauk Residential School
- Church of England - Building Maintenance -
Supplies - Accounts. 1935 - 1937.

File 469-5, part 7

Caradoc Agency - Shingwauk Residential School
- Church of England - Building Maintenance -
Supplies - Accounts. 1939 - 1944.

File 469-5, part 8

Caradoc Agency - Shingwauk Residential School
- Church of England - Building Maintenance -
Supplies - Accounts - General Administration.
1945 - 1949.

File 469-5X, part 1

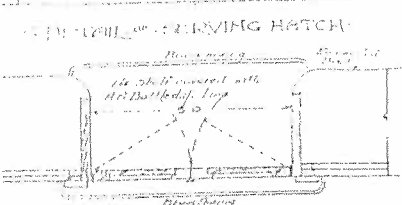
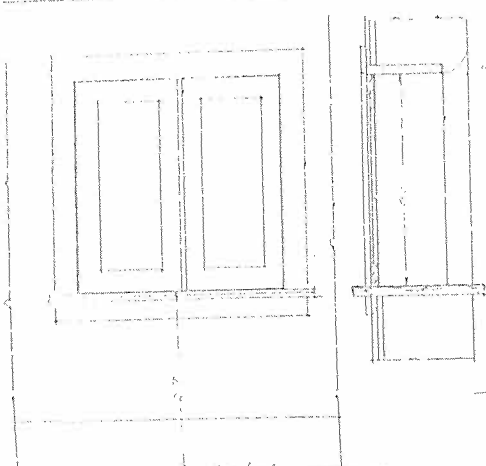
Caradoc Agency - Shingwauk Residential School
- Church of England - Appointment of Inspector
of Construction. 1906 - 1936.

File 469-9, part 1

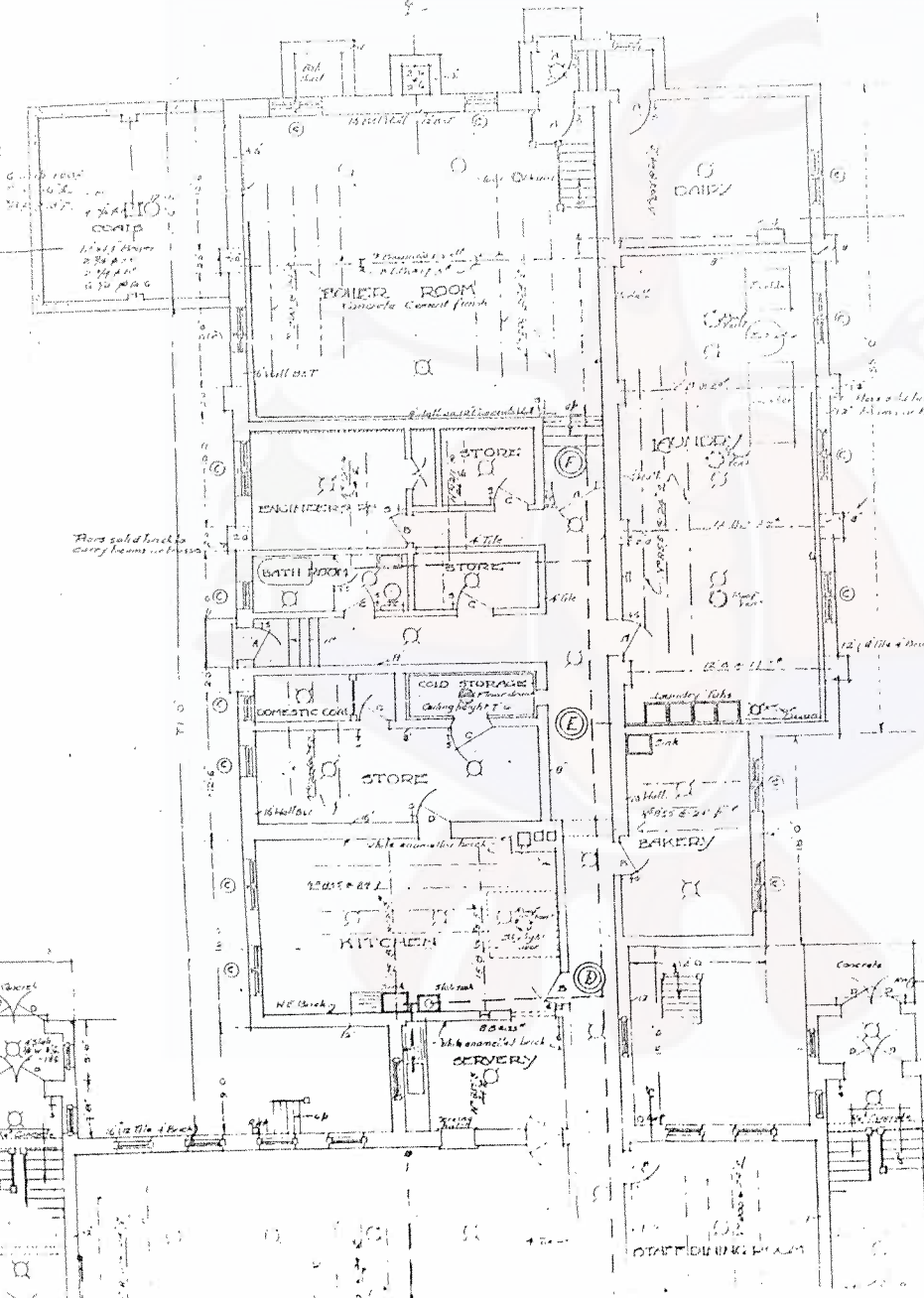
Caradoc Agency - Shingwauk Residential School
- Church of England - School Land (Plan, Map)
- General Administration. 1927 - 1942.

Indian Affairs. (RG 10, Volume 6213, file 469-5, part 6)

PUBLIC ARCHIVES
ARCHIVES PUBLIQUES
CANADA



- SWITCH CHANGES No. 1**
 2 Switches Reception Room
 1 each for Washroom, Toilets, Baths, Staircase and Corridor
- SWITCH CHANGES No. 2**
 2 Switches Reception Room
 1 Switch each for Wash room, Toilets, Baths, Staircase and Corridor (2 Lights)
 2 Switches Dining Room (ceiling)



- SYMBOLS**
- ⊕ LIGHT SWITCHES
 - ⊕ CHANGES LIGHTS
 - ⊕ SWITCH BOARD OUTLETS
 - A 3' 0" x 7' 0" DOORS
 - B 2' 0" x 7' 0"
 - C 2' 8" x 6' 8"
 - D 2' 0" x 7' 0"
 - ⊙ CRISPMENT WINDOWS

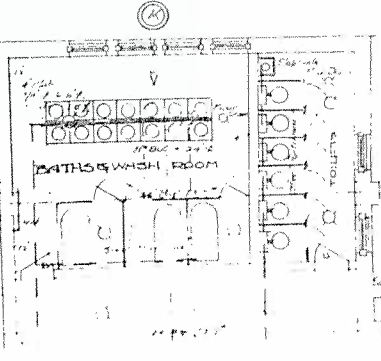
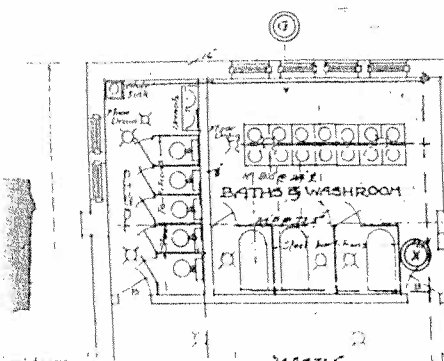
DOORS FINISHED GIVE TOP PANELS SLICED

NOTE AS TO STEELWORK
 Double joints under partitions on all floors
 All steel columns supporting ground floor are 3' 0" x 3' 0"
 Pillars buttresses etc carrying I-beams and gusses to be constructed of brick

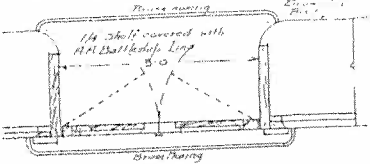
Approximate Location of Water Pipes
 Shown Thus

Approximate Location of Test Holes
 Shown Thus

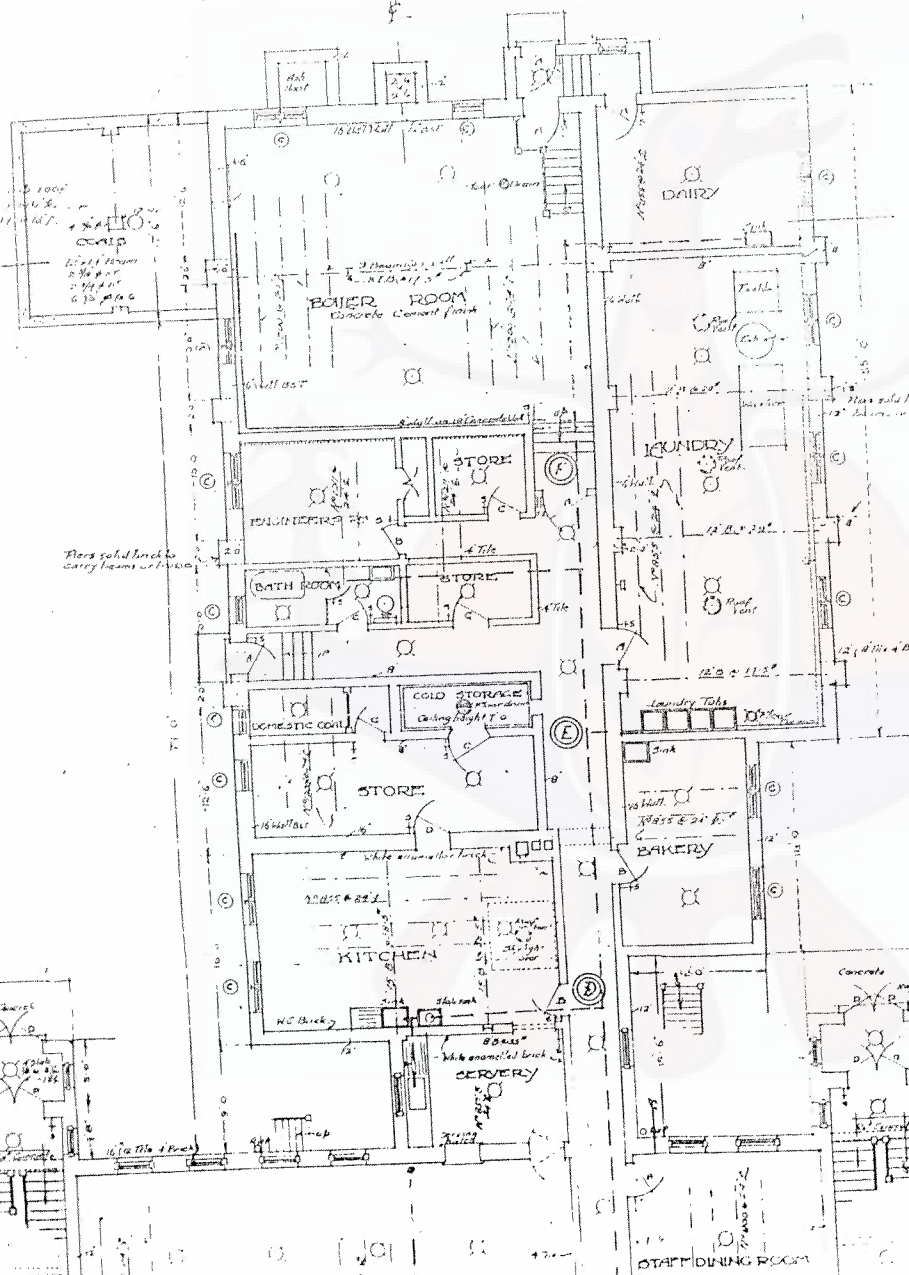
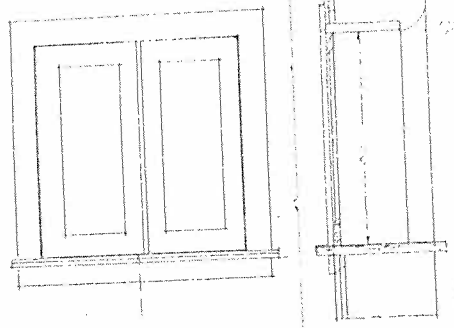
The following information accordance with plan of letter of 17th, 19, 19. Rev. C. F. Hives, Princ.
 Pipes taken overhead shown thus
 Pipes have been removed and fared shown thus
 All pipes have been 100 lbs. per inch



DETAIL OF SERVING HATCH:



- SWITCH CHAINET No 1**
 2 Switches Recreation Rm
 1 Switch each for Washroom Toilet Baths
 Staircase and Corridor
- SWITCH CHAINET No 2**
 2 Switches Recreation Rm
 1 Switch each for Wash room Toilet Baths
 Staircase and Corridor (Lights)
 2 Switches Dining Rm (couple)



- SYMBOLS**
- ⊕ LIGHT SWITCHES
 - ⊞ CROWN LIGHTS
 - ⊞ SINK LAIRD CUTOUTS
 - A 3'0" x 10'
 - B 2'10" x 10'
 - C 2'8" x 10'
 - D 2'0" x 10'
 - ⊙ CASSEMENT WINDOWS

DOOR MINOR JOINTS TOP PANEL
 SEALED

NOTE AS TO STEELWORK
 Double joints under partitions on all floors
 All steel columns supporting Ground Floor
 are 8" x 4" @ 23"
 All tiers buttresses etc carrying I beams and
 brusses to be constructed of brick.

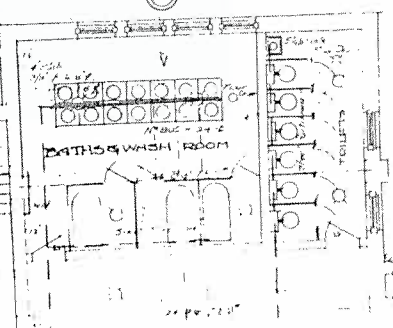
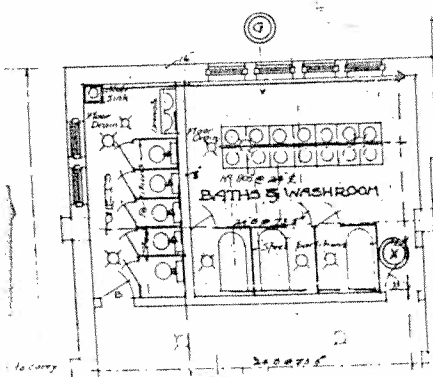
Approximate Location of Water Pipes
 Shown Thus ————
 Approximate Location of Test Holes
 Shown Thus ⊙

The following information
 accordance with plan etc
 letter of Mar. 19, 1938
 Rev. C. F. Hives, Princip

Pipes taken overhead
 Shown Thus

Pipes have been renewed
 and tarred Shown Thus

All pipes in
 have been to
 100 lbs. pres
 per instruct





Supply Connections
 25' Water Connection from
 1" - 1/2" to Kitchen, Bath, Wash
 Closets and Corridors

Drain Connections
 3" Sinks, Washroom, etc.
 1" Sinks each for Wash room, Bath, Wash
 Closets and Corridors (2 1/2" dia)
 2" Sinks, Dining Room, etc.

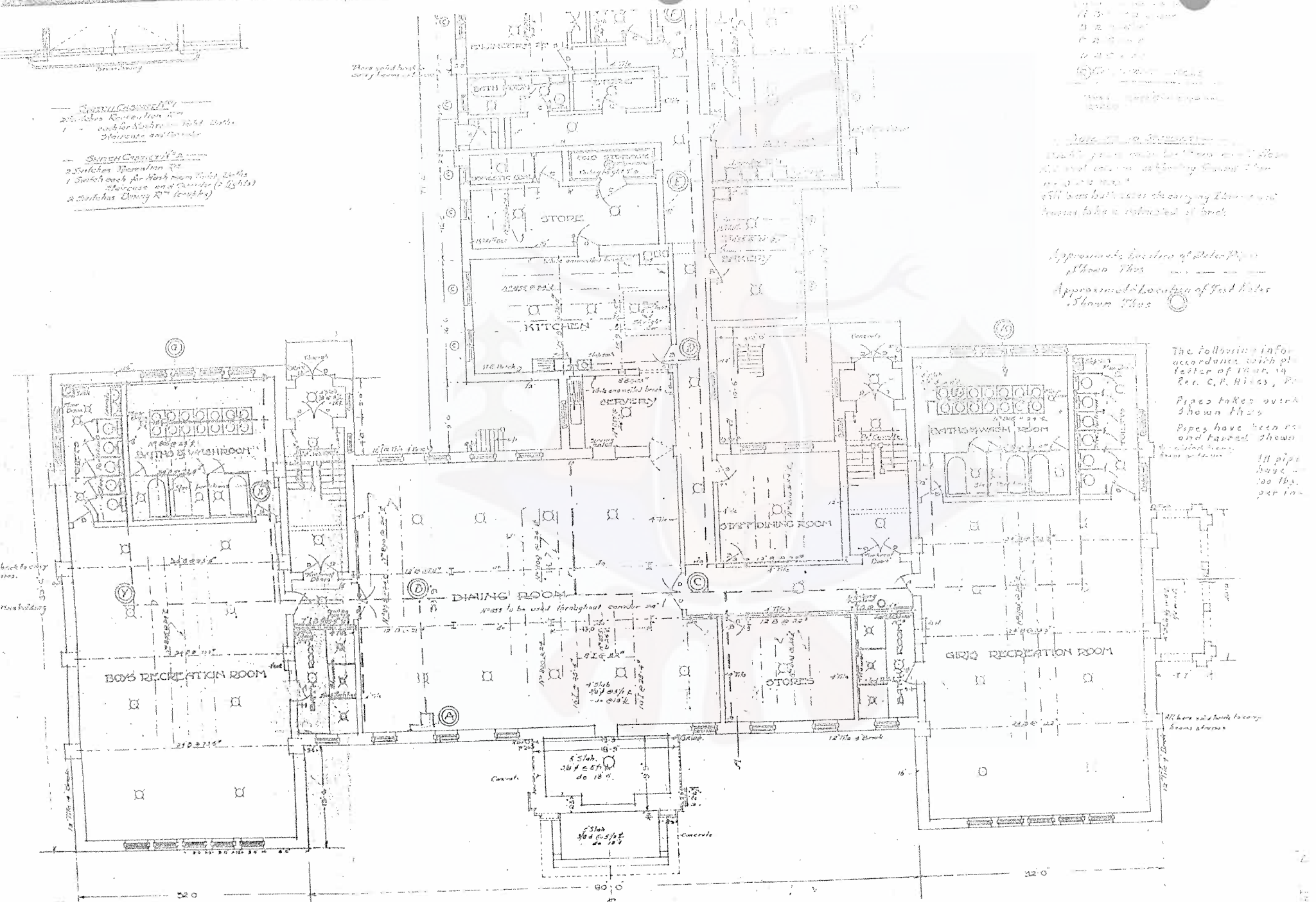
1" 1/2" to Kitchen
 1" 1/2" to Bath
 1" 1/2" to Wash
 Closets
 2" to Dining
 3" to Sinks, Washroom, etc.
 1" Sinks each for Wash room, Bath, Wash
 Closets and Corridors (2 1/2" dia)
 2" Sinks, Dining Room, etc.

Notes on Drainage
 1. All drains shall be connected to the
 main drain system, including ground floor
 in 2" dia pipe.
 2. All drains shall be covered by the main
 drain system, including ground floor.

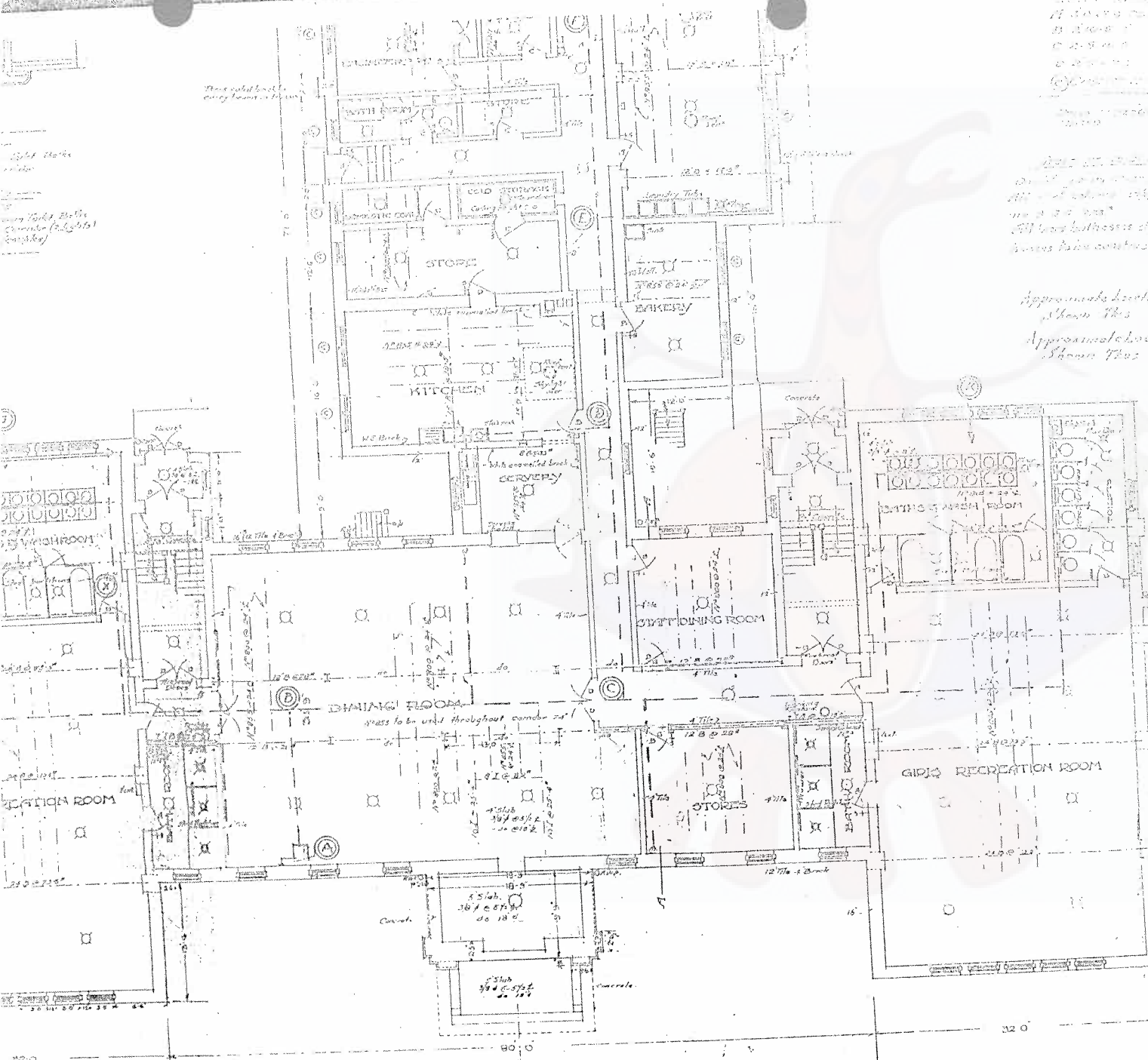
Approximate location of Water Pipes
 Shown Thus
 Approximate location of Gas Pipes
 Shown Thus

The following information
 accordance with the
 letter of March 19
 Rev. C. P. Hines, Jr.

Pipes taken over
 shown thus
 Pipes have been re-
 and tested, shown
 as indicated
 All pipe
 have
 100 lbs.
 per in.



BASEMENT PLAN



Light marks
 in
 concrete (lights)
 (rough)

These pipes lead to
 every basement room

17
 18
 19
 20
 21
 22
 23
 24
 25
 26
 27
 28
 29
 30
 31
 32
 33
 34
 35
 36
 37
 38
 39
 40
 41
 42
 43
 44
 45
 46
 47
 48
 49
 50
 51
 52
 53
 54
 55
 56
 57
 58
 59
 60
 61
 62
 63
 64
 65
 66
 67
 68
 69
 70
 71
 72
 73
 74
 75
 76
 77
 78
 79
 80
 81
 82
 83
 84
 85
 86
 87
 88
 89
 90
 91
 92
 93
 94
 95
 96
 97
 98
 99
 100

Approximate location of
 pipes shown thus
 Approximate location of test holes
 shown thus

Approximate location of
 pipes shown thus
 Approximate location of test holes
 shown thus

The following information is
 in accordance with plan prepared with
 letter of Mar. 19, 1935 from
 Rev. C. B. Niles, Principal.

Pipes taken overhead
 shown thus

Pipes have been renewed,
 and furred shown thus

All pipes in basement
 have been tested with
 100 lbs. pressure as
 per instructions

All lines and beams to carry
 beams above.

Dept of Indian Affairs
 Ottawa Canada
 R. Surrency Cr. R. A. I. C.
 Plan No 663 Sheet No 3

BASEMENT PLAN

- Copy -

HOUSE of COMMONS

C a n a d a

Sault Ste. Marie, Ontario,
February 27th, 1939.

The Honourable T. A. Crerar,
Minister of Mines and Resources,
O t t a w a, Ontario.

Dear Mr. Crerar:

We have on more than one occasion discussed the situation with regard to the watermain supplying the Shingwauk Indian Home east of Sault Ste. Marie. This main is in very poor and even precarious position and at any time the water service may be tied up. You were agreeable to proceeding with the work this winter if it could have been taken care of out of some of the grants made for relief work in Northern Ontario. Mr. Rogers was agreeable to doing this but the Provincial Government could not see their way clear to do so.

I think now provision should be made in the estimates for the coming year to take care of this work. I have spoken to the manager of the Public Utilities Commission here today and he advised me that he feels satisfied that \$6,000.00 would take care of one-half the total cost for material, supervision and labour and suggests the Federal Government either agreeing to split fifty fifty on the total cost or to make a definite contribution of \$6,000.00 and the Public Utilities Commission will do the job and take care of any additional cost which he thinks will be approximately a similar amount, namely \$6,000.00.

I hope that this will be taken care of this year.

Yours sincerely,

(sgd.) H. S. Hamilton.

Indian Affairs. (RC 10, Volume 6213, file 469-5, part 6)

PUBLIC ARCHIVES
ARCHIVES PUBLIQUES
CANADA

Indian Affairs
School Files

(RG 10, Volume 6213)

File 469-5, part 5	Caradoc Agency - Shingwauk Residential School - Church of England - Building Maintenance - Accounts - Supplies - Principal's Res. 1935 - 1937.
File 469-5, part 6	Caradoc Agency - Shingwauk Residential School - Church of England - Building Maintenance - Supplies - Accounts. 1935 - 1937.
File 469-5, part 7	Caradoc Agency - Shingwauk Residential School - Church of England - Building Maintenance - Supplies - Accounts. 1939 - 1944.
File 469-5, part 8	Caradoc Agency - Shingwauk Residential School - Church of England - Building Maintenance - Supplies - Accounts - General Administration. 1945 - 1949.
File 469-5X, part 1	Caradoc Agency - Shingwauk Residential School - Church of England - Appointment of Inspector of Construction. 1906 - 1936.
File 469-9, part 1	Caradoc Agency - Shingwauk Residential School - Church of England - School Land (Plan, Map) - General Administration. 1927 - 1942.

Indian Affairs. (RG 10, Volume 6213, file 469-5, part 7)

Indian Affairs
School Files

(RG 10, Volume 6213)

File 469-5, part 5	Caradoc Agency - Shingwauk Residential School - Church of England - Building Maintenance - Accounts - Supplies - Principal's Res. 1935 - 1937.
File 469-5, part 6	Caradoc Agency - Shingwauk Residential School - Church of England - Building Maintenance - Supplies - Accounts. 1935 - 1937.
File 469-5, part 7	Caradoc Agency - Shingwauk Residential School - Church of England - Building Maintenance - Supplies - Accounts. 1939 - 1944.
File 469-5, part 8	Caradoc Agency - Shingwauk Residential School - Church of England - Building Maintenance - Supplies - Accounts - General Administration. 1945 - 1949.
File 469-5X, part 1	Caradoc Agency - Shingwauk Residential School - Church of England - Appointment of Inspector of Construction. 1906 - 1936.
File 469-9, part 1	Caradoc Agency - Shingwauk Residential School - Church of England - School Land (Plan, Map) - General Administration. 1927 - 1942.

Indian Affairs. (RG 10, Volume 6213, file 469-5, part 8)

PUBLIC ARCHIVES
ARCHIVES PUBLIQUES

13-0-5

The Indian School Administration

of the

Missionary Society of the Church of England in Canada

TELEPHONE 2-7096

BANK STREET CHAMBERS

102 BANK STREET

OTTAWA

1
2
BANK YOUR REPLY
ATTENTION

December 3rd, 1946.

Indian Affairs Branch,
Department of Mines and Resources,
Booth-Building,
O T T A W A.

Attention of Mr. P. Phelan.

Gentlemen:

With reference to our conversation of a few days past regarding coping required around the roof of Shingwauk Residential School, SAULT Ste. Marie.

When I inspected this school in April, the Principal, Reverend Canon A. E. Minchin, showed me holes in the ground caused by ice slides from the roof of the Shingwauk School. It was his contention that the children of the school had been fortunate in the past to avoid being struck by such missiles, but asked that this office draw your attention to the dangers existing if this condition is permitted to continue.

It is suggested, therefore, that your Department make further enquiries into this matter and ensure the future safety of the school children.

Yours very truly,

J.C.H. Forward
J.C.H. Forward,
Business Manager.

JCHF/ajd

DEC 5 1946
REGISTERED